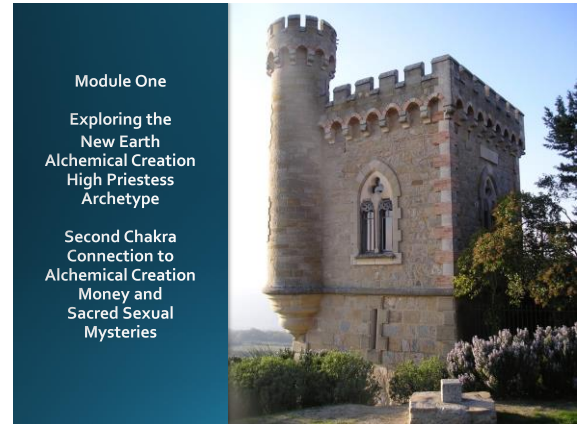




1



2



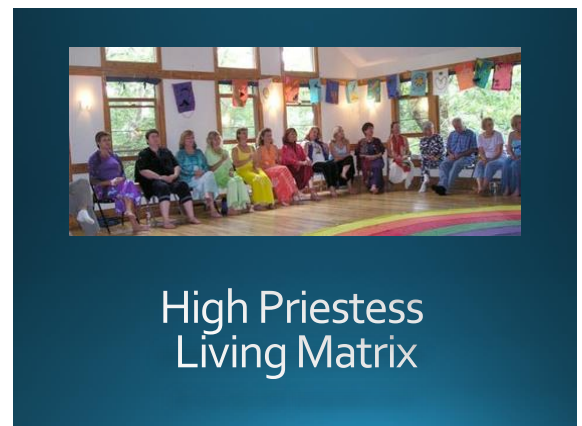
3



4



5



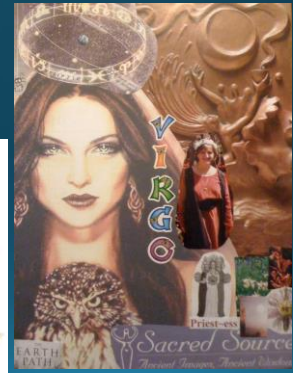
6



Second Chakra Womb Connection

13

Where do you need to connect the sacred to making money or dealing with financial matters?



14

Is there a part of your business or money-making endeavors are you not holding as sacred?

- Sales?
- Marketing?
- Assistants?
- Planning?
- Calling Your Clients?
- Other?



15



Connect to the sacred patterns and timings for your business and/or financial flow...

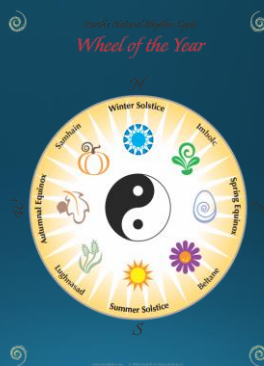
16

Fine tuning your ability to dance with creation!



17

Where do you need to be more rhythmic in your business or financial flow?



18



19



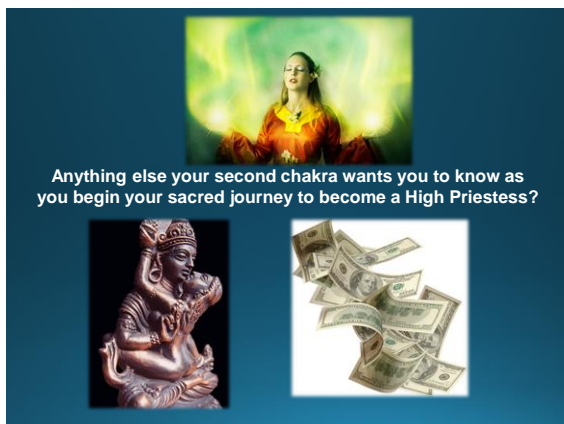
20



21



22




23



24

Celestial Forest presents...



New Earth High Priestess

New Earth High Priestess Suggested Guidelines & Tools

Creating Sacred Space For Each Call
There are a couple things you can do to support your experience before each call or listening to the replay.

- 1) If possible find a quiet place to listen to the call free from distractions.
- 2) Turn off cell phones and other distractions.
- 3) Have some paper handy or your journal or the process.
- 4) Create sacred space and/or a little altar by placing some fresh flowers or even some lovely leaves or a potted plant near you. Having a bowl and/or glass of water nearby. Light a candle if you feel called to do so. Place any of your favorite sacred objects that you want in the area. The more you create sacred space for yourself with each call the more powerfully the energy will work with you.

25

Celestial Forest presents...



New Earth High Priestess


New Earth High Priestess Tracking Sheet 2021-22

Name You Are Enrolled in the Priestess Circle Under:
Name You Want to Have on Your Certificate:
Email:
Phone:
Emergence Date:

This tracking document is for you to keep track of where you are in the process. If you would like a certificate of completion at the end of the process you will need to send it in to the office after your emergence. ThreeFeathers@kustmail.com


Place in the empty space for each week for yourself the date you listened to the program and one or two insights you received. The bonuses are not required. Use as much space as you need. Tracking is essential for you to receive a combining certificate.

26



Dreamtime Temple Work

27




Integrate

28


Crystalline Grid Activation

- Activation of the Crystalline Energy System
- The geometric configuration of Growth, Belonging, and Harmony
- Gentle & Easy Transition into High Priestess Archetype
- Mastery over Second Chakra Mysteries
- Mastery over Opening to More



29

Gratitude & Closure



30