

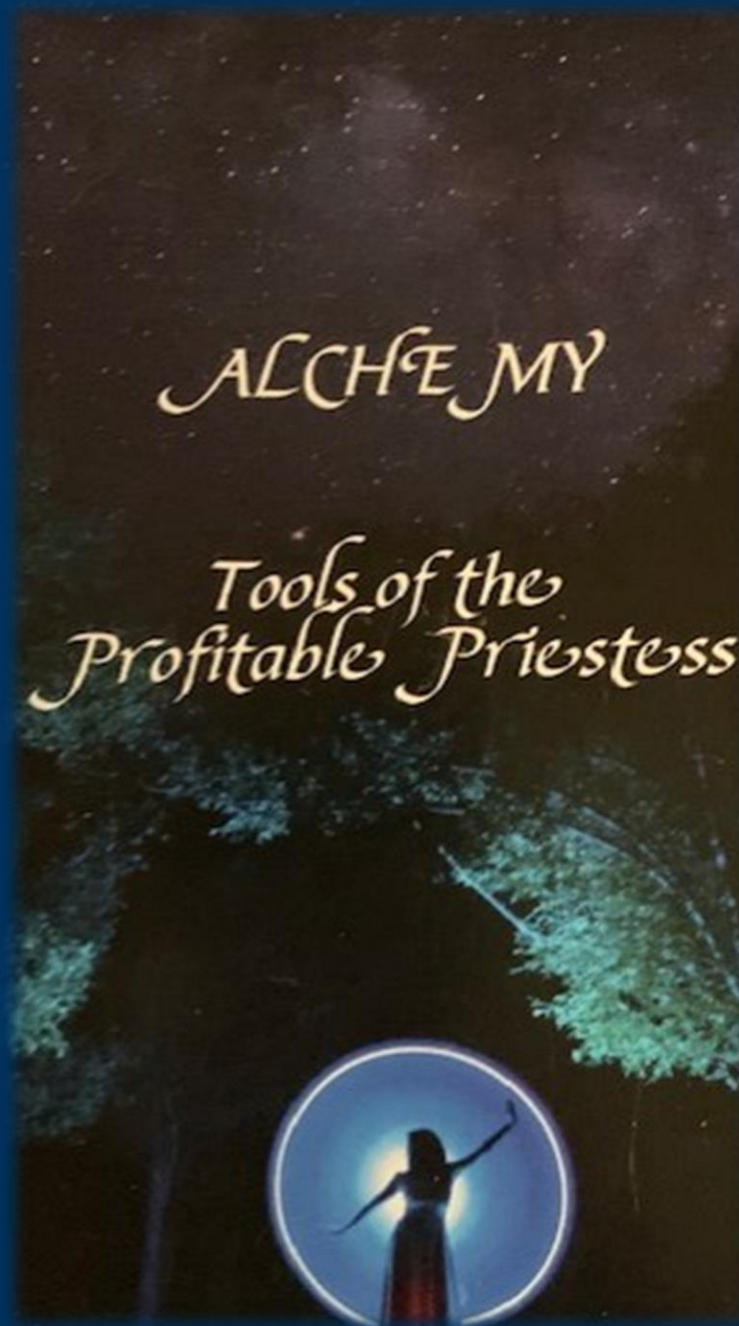
*Welcome
to the
New Earth
High Priestess
Process*





Call In Sacred Space

Spiritual/Creative/Financial Flow



Personally and Collectively

Open to
Receive

Ancient
alchemical
wisdom
teachings.

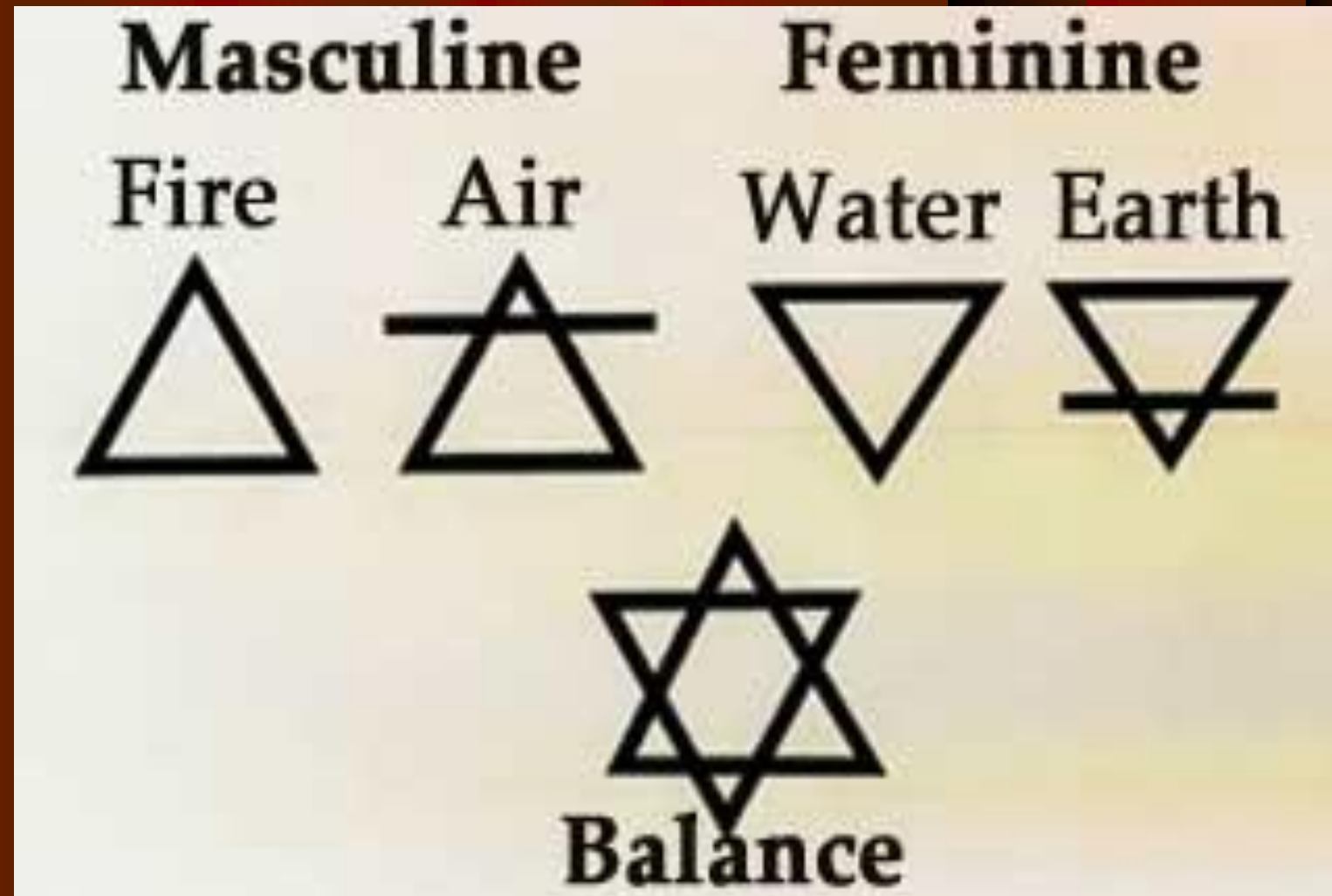


THE
ELEMENTAL
FORCES OF
CREATION

An Alchemical Priestress Mystery School

High Priestess ~ Creatrix Level
Magdalene Christ Mysteries

Inner Sacred Marriage Symbol



Easter, The Alchemical Holiday

Most people think of Easter as a purely Christian holiday, because it celebrates the death and resurrection of Christ, but when looked at from an alchemical point of view, we can see that this holiday is rooted in ancient alchemy. First of all Christ was arrested and persecuted for claiming to be a King and the Son of God: when we first place our foot upon the Path of Initiation, we make the declaration of our intention to claim our heritage as magical beings of Light and to master or become a queen/king of the Elements. In doing this we incite negative repercussions such that the term we often use to describe this is "Dark Night of the Soul". This Dark Night is essential to the alchemical process, because it seems to be the only way to insure rapid, alchemical growth. Next, in the story of Easter, Christ is forced to climb a mountain carrying his Cross: in alchemy, we call this "The Mountain of Initiation" this is the journey of our own personal alchemy, and we carry the burden our ego, which we must sacrifice on the mountain.



His hands and feet were nailed to the Cross: the nails alchemically represent the Iron of Will piercing the four alchemical Elements, which suggests placing one's pentagram under the Iron Will of Mars energy.

The final wound came when a Roman soldier pierced his side with a spear after he had died to ensure that he was dead: out of this wound came blood mingled with water, which represents active and passive, Water and Fire; this being mingled represents alchemical completion: perfect harmony between the Elements.

This corresponds to alchemical Silver and Gold, again suggesting the Stone of the Wise and alchemical completion.



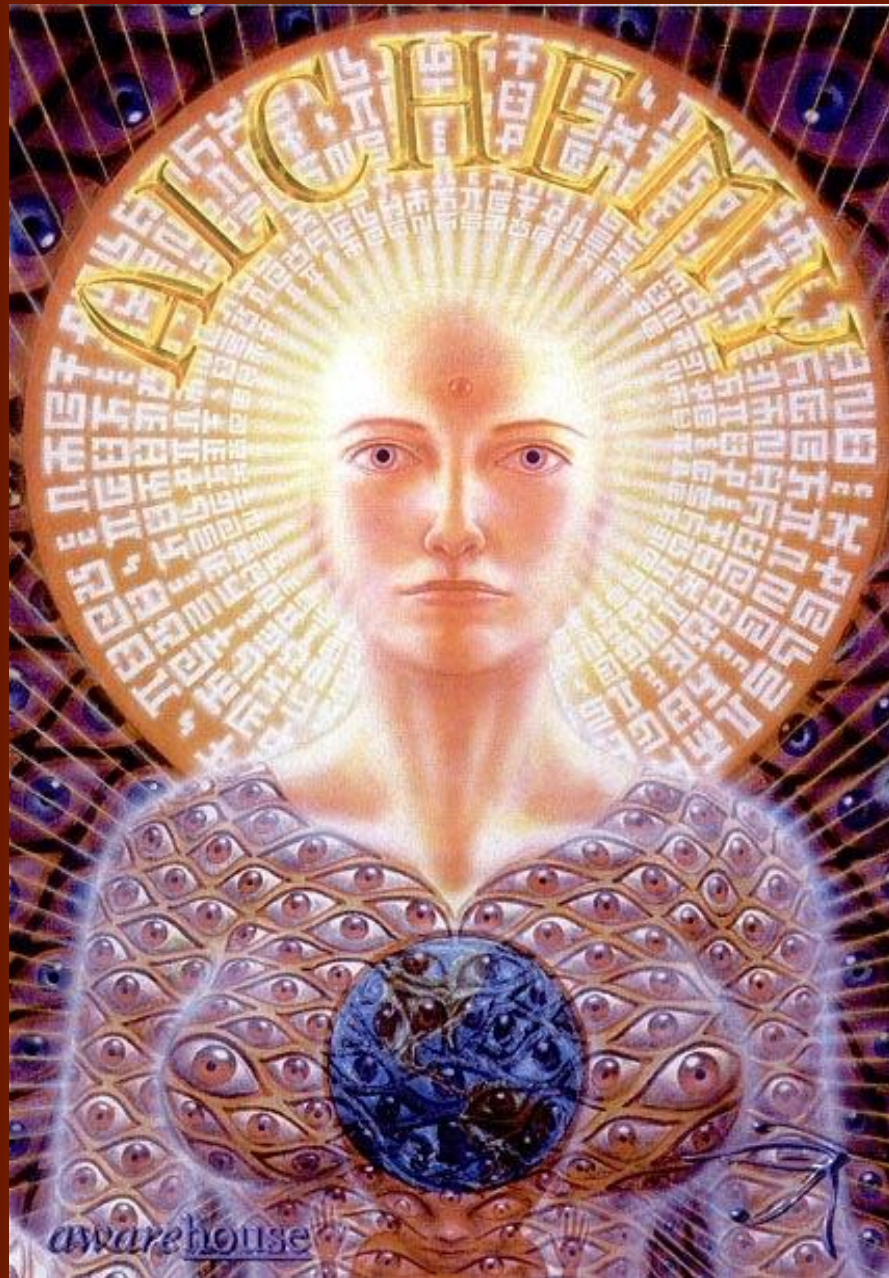
He was then placed in a tomb where he stayed for three days after which; he was raised from the dead: this represents the alembic of the alchemist: the Alchemical Egg, which corresponds also to the Easter Egg.

The Easter Bunny seems to suggest alchemical resurrection, since rabbits are a traditional symbol of fertility and new life. Death and resurrection is the central concept of all Spiritual Alchemy, and the Spring celebration of Easter is an alchemical holiday, which has been blended with Christian concepts, which are in fact deep alchemical concepts.

The alchemical value has been neglected from Christian thinking, but not lost: the Spiritual Alchemy is there; it just needs to be awakened.



Illumined Being





The cross is a symbol that is about as universal and ancient as any symbol that has emerged out of man's psyche.

The cross symbolizes the meeting at right angles of horizontals and perpendiculars. Forces going in quite opposite directions but meeting at a central point, a common ground.

It can symbolize the union of opposites and the dualism in nature. It can be the outstretch archetypal man with the infinite possibilities of growth being immortal.

It represents eternal life. The cross can symbolize the decent of Spirit into matter. It is the intersection of the level of time with the Eternity of the Spirit.

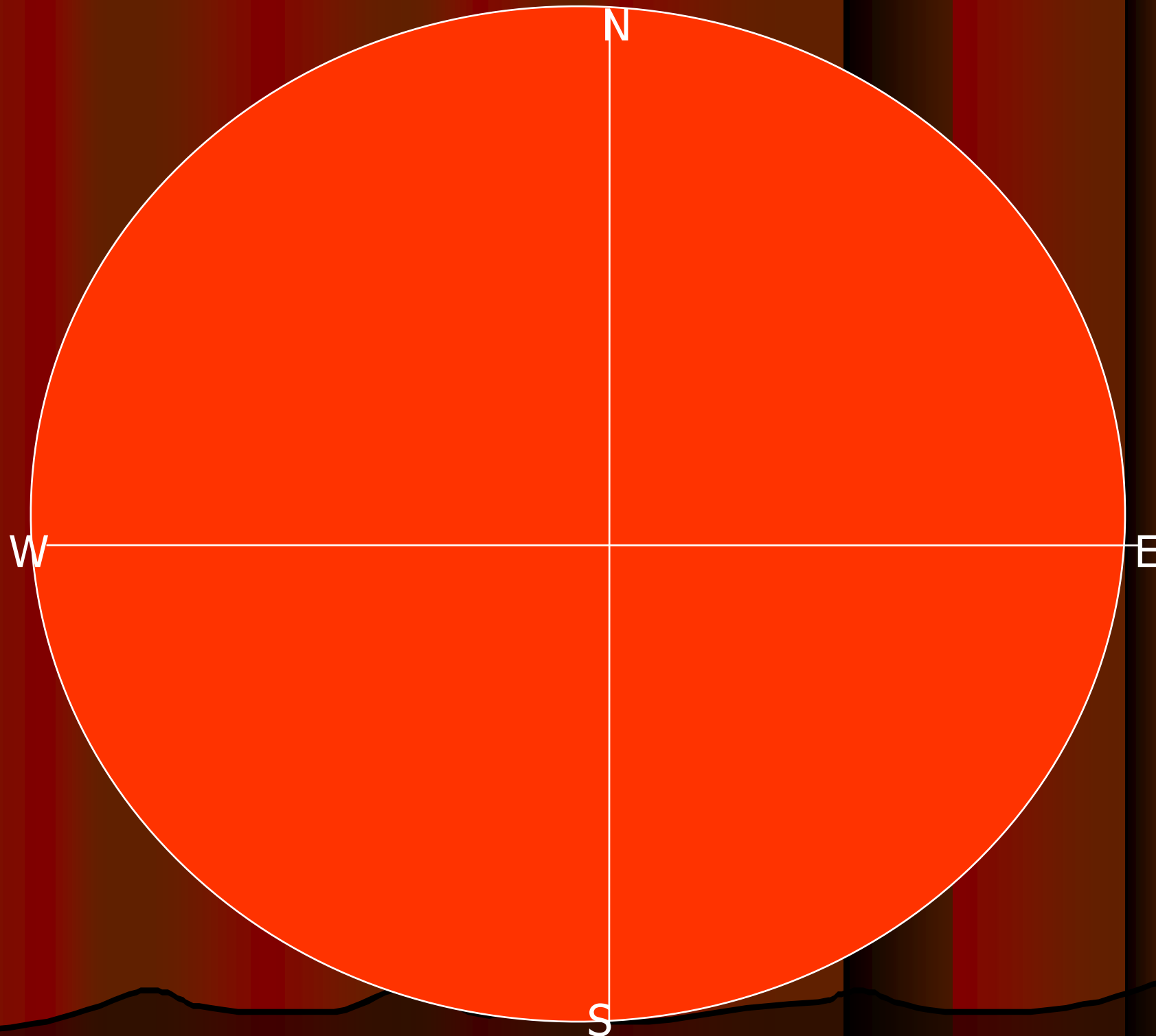


Always implied by a cross is the center point. This is a Sacred Geometric Symbol that activates our psyche. This is why it is so potent to sit in an active wheel. It turns things on. It represents the ONE. It represents your SOUL. Just let the implications perk.

A large, glowing sphere of light and stars, resembling a celestial body or a universe, dominates the upper half of the image. It is composed of numerous bright, yellow and orange stars of varying sizes, connected by a network of thin, blue lines. A brilliant, white point of light at the center of the sphere radiates outwards, creating a starburst effect. Below the sphere, a bright, horizontal band of light stretches across the image, with rays of light emanating from it, suggesting a powerful explosion or a source of energy. The background is a deep, dark blue, filled with distant, faint stars and a subtle, glowing nebula-like structure.

That Center Point explodes into this sphere...the Explosion of Creation...

And contained within that Explosion, are so many other EXPLOSIONS OF CREATION...Like the WHEEL OF THE YEAR...With the cross as the axis of the cycle of the year whose spokes are the equinoxes and solstices. It is the crossroads where the four directions meet.



N
Winter
Solstice

Samhain

Imbolc

E
Spring
Equinox

W
Autumnal
Equinox

Beltane

Lammas

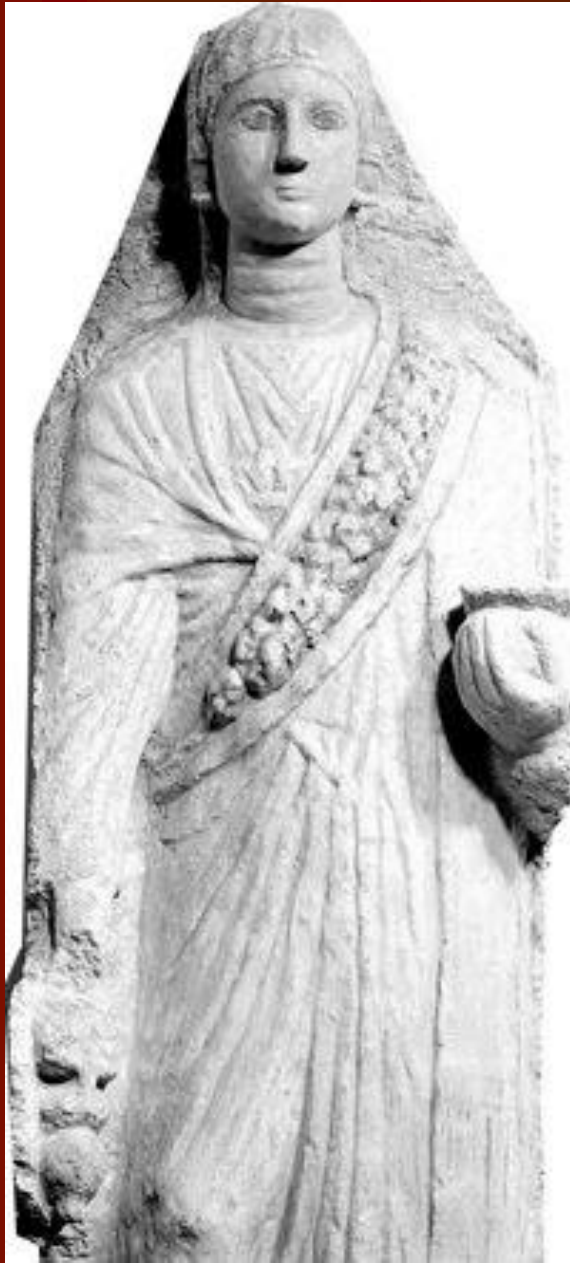
S
Summer
Solstice



In the Egyptian mythos the crux ansata or - a type of cross - was a symbol of life, immortality, and health. It is held by the gods and goddesses. It also represented the union of Isis and Osiris.



Mary Magdalen, Priestess

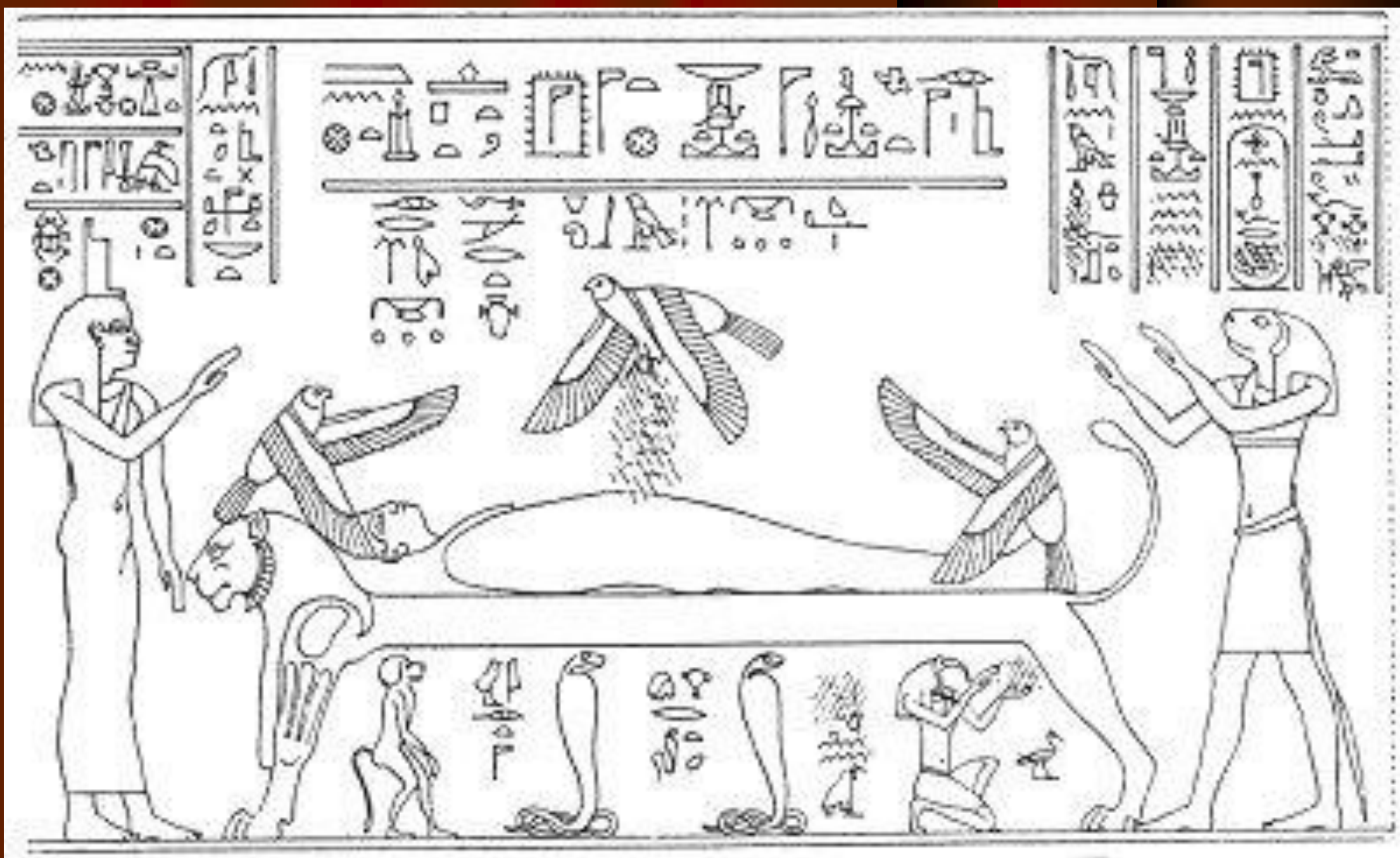


A priestess of Isis with her sistrum and funeral unguent.

Mary Magdalen is frequently portrayed carrying a jar of precious spikenard oil for anointing the body of Christ. Previously, the 'alabaster jar' was an accoutrement of the priestess of Isis, the goddess whose ministrations resurrected her husband Osiris. The ancient Cult of Isis stressed a symbolic death and resurrection as a metaphor for spiritual rebirth.

"I have traveled through the tomb,
dark and lonely ground. I am here
now. I have come. I see."

~From the [Book of the Dead](#)





“From prehistoric times, the Universal Goddess had appeared in many guises and had been known by many names; however personified, she was always identified with Isis the Universal Mother, Mistress of all the Elements...” ‘Bloodline of the Holy Grail’ by Lawrence Gardner (Isis is the Beloved of Osiris, both masters of the alchemy of transmutation through the elements)

Magdalene was a High Priestess of Isis
and born of Royal Lineage
She was said to be as Beautiful as She Was Rich



Margaret Starbird

- ✂ In 1985 I read a book that seemed to me at the time to be utterly blasphemous, a book called "Holy Blood, Holy Grail" (Michael Baigent, Henry Lincoln, Richard Leigh) that suggested that Jesus and Mary Magdalene were married and that their bloodline survived in Western Europe.¹ The word "sangraal" had, it seems, been misunderstood. When the word was broken after the "n" (san graal) it was thought to mean "Holy Grail," but if it was broken after the "g," the word rendered "sang raal," which in Old French meant "blood royal."
- ✂ We are now faced with a legend that says that Mary Magdalene brought the "blood royal" to the coast of France in 42 A.D. One does not carry the blood royal in an alabaster ointment jar with a lid. The blood of kings is carried in the veins of a child. In the revised interpretation of the Medieval legend, the "vessel" that once contained the "sang raal" was not an artifact, but rather, a woman--Mary Magdalene herself--mother of a royal offspring of the Davidic bloodline.

Magdalene and Mary the mother anoint Jesus' body with specific unguents, ones known to alchemically aid in Christ's after-death journey, and then wrap his body in linen in preparation for burial....certainly a task only to be entrusted to the ones closest to him.



The Rose

The Rose with its word anagram 'Eros', has long been associated with 'Our Lady', whether she be in her role as Mary the Mother, Magdalene the Lover, or Saint.

It is also associated with the heart of Christ, the Rose of Sharon. The five-petalled rose, Rosa Rugosa, is the earth's oldest known variety of rose and is a repeating symbol present at many Templar church sites.



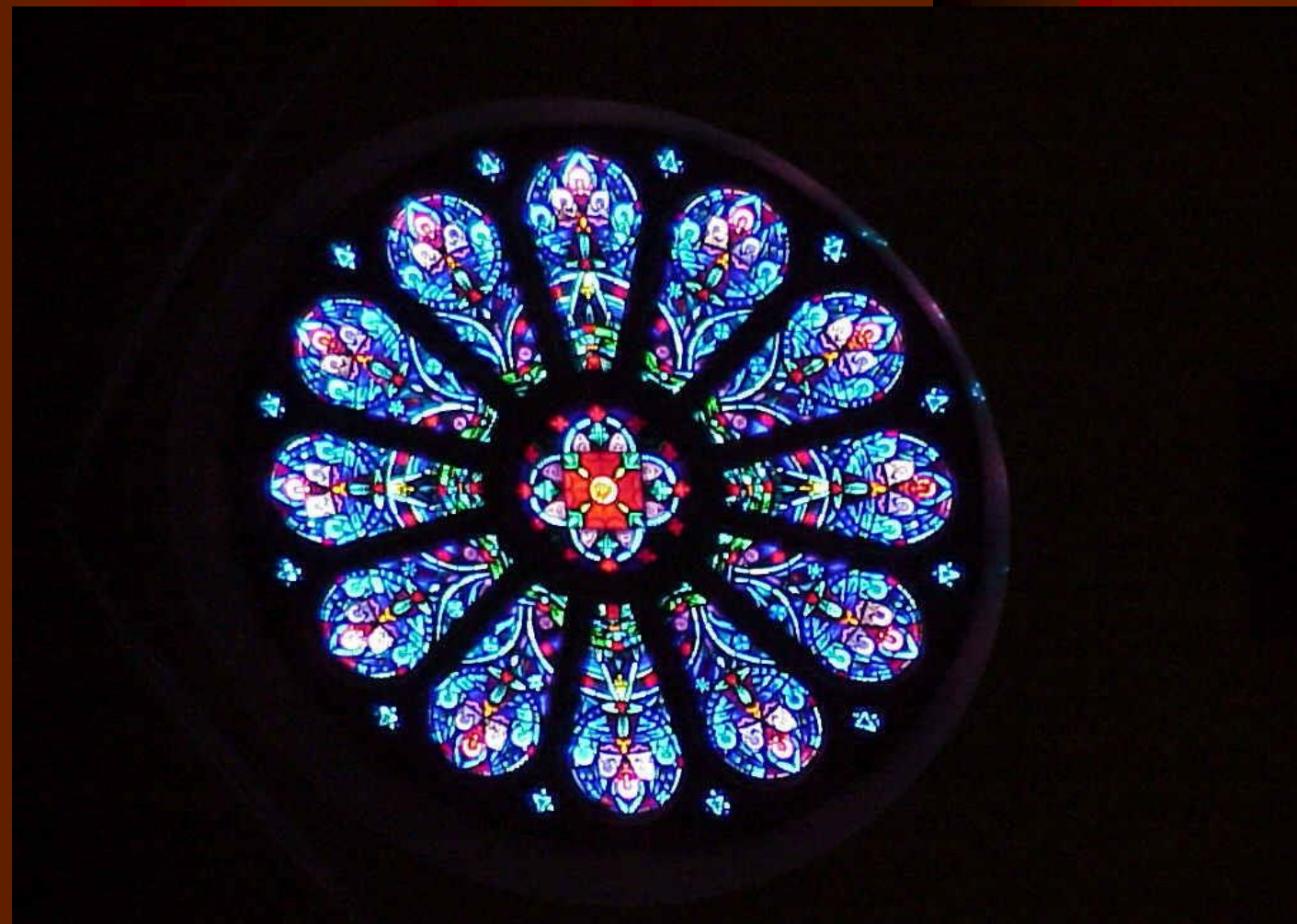
The rose (Latin, rosa, in Greek, rhodon) also is a symbol that has a rich and ancient history. And like the cross, it can have paradoxical meanings. It is at once a symbol of purity and a symbol of passion, heavenly perfection and earthly passion; virginity and fertility; death and life.

The rose is the flower of the goddess Venus but also the blood of Adonis and of Christ. It is a symbol of transmutation - that of taking food from the earth and transmuting it into the beautiful fragrant rose.

The rose garden is a symbol of Paradise. It is the place of the mystic marriage. In ancient Rome, roses were grown in the funerary gardens to symbolize resurrection. The thorns have represented suffering and sacrifice as well as the sins of the Fall from Paradise.



The rose has also been used as a sign of silence and secrecy. The word sub rosa "under the rose" referring to the demand for discretion whenever a rose was hung from the ceiling at a meeting. In the Mysteries roses were sacred to Isis. It is also the flower of her son Harpocrates or younger Horus, the god of silence.



Easter was originally (and still is) a celebration of the fertility of the earth, renewed each springtime. The egg, the chick, the rabbit, the flowers, are all fertility symbols (and much older than the Christian symbol of the resurrected god).

Its celebration has often been marked by sexual exuberance, as is still prominent in the pre-Lenten Carneval and Mardi Gras festivals and the phallic symbolism of the May pole and the cross.



Long before Jesus, many peoples associated this festival with the coming back to life of the god of fertility (Tammuz - see Ezek 8:14, Adonis, Osiris, Perseus, Orpheus), who had been dead in the underworld during the winter.

Even the name by which Christians still celebrate the festival is a corruption of the name of the ancient fertility goddess Ishtar or Ashtoreth (whose name also survives in the name of one of the books of the Old Testament, the only Bible book that contains no reference to God - the Book of Esther).



The Christian church, because it could not eradicate the celebration of this popular festival, reinterpreted it and assigned to it a new meaning, but was unable to erase completely its original significance.

The egg and the rabbit, the phallic pole or cross (the real symbols of the festival) will continue to be loved and celebrated as long as we can marvel at the new life which the spring brings.



The egg is one of the oldest Springtime symbols in the world. Ancient Persians, Phoenicians, Hindus and Egyptians believed the world began with an egg. A legend says a great egg broke in half forming the earth and sky with the yolk as the sun.

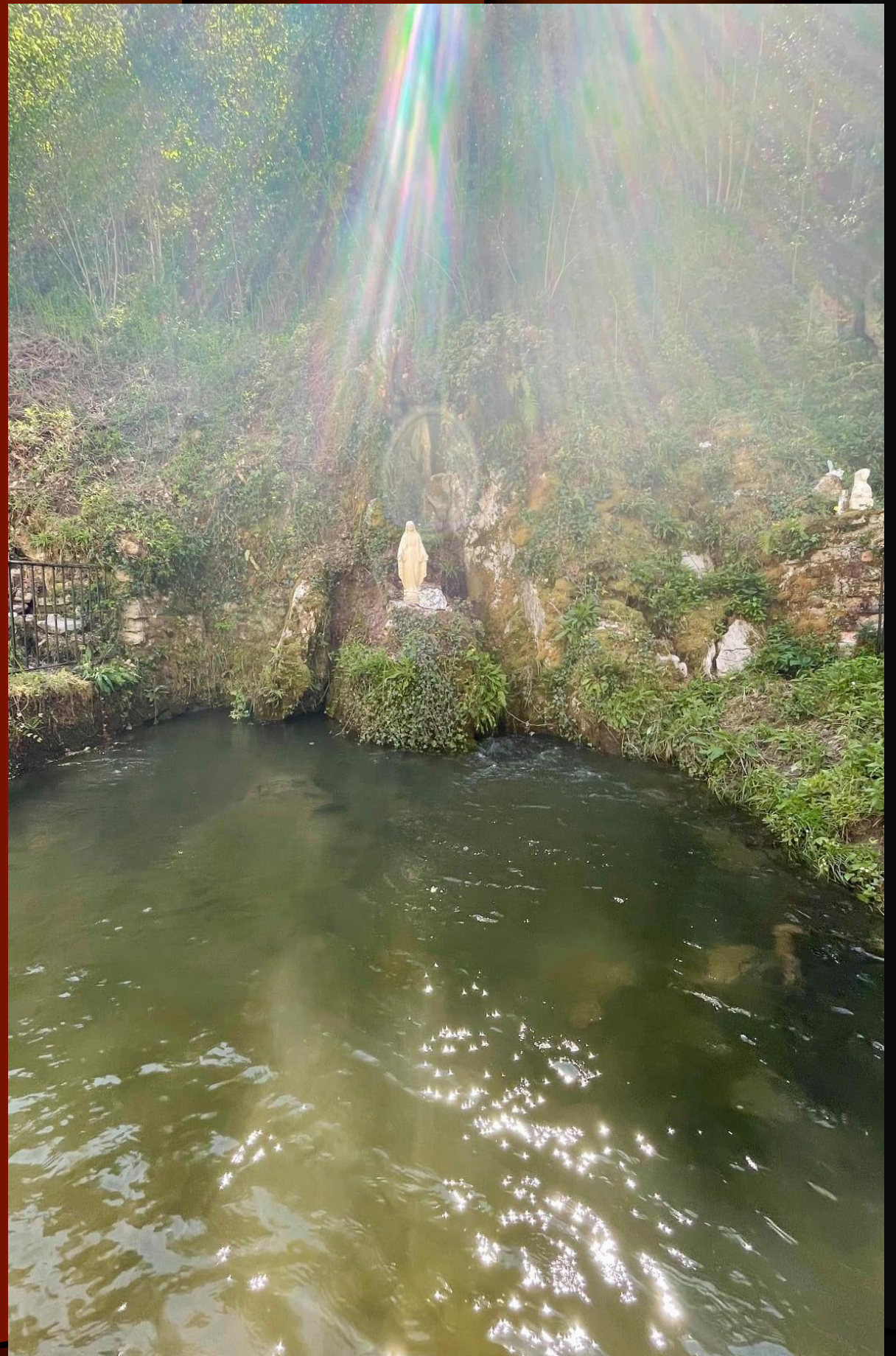
Eggs were given as gifts in ancient China, Greece and Rome. The Celts worshipped serpents eggs that stood for eternal life.

As Christianity appeared the egg became the symbol of Christ's resurrection from the tomb. Now people decorate eggs of all types and they can be encrusted with gold, silver, and precious stones.

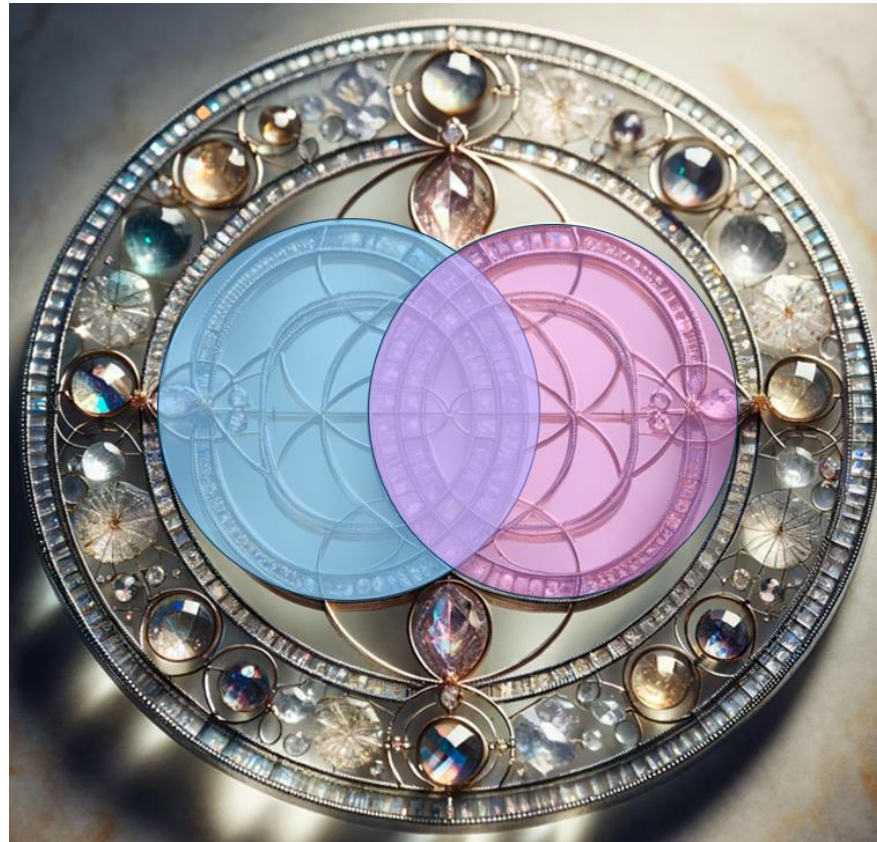
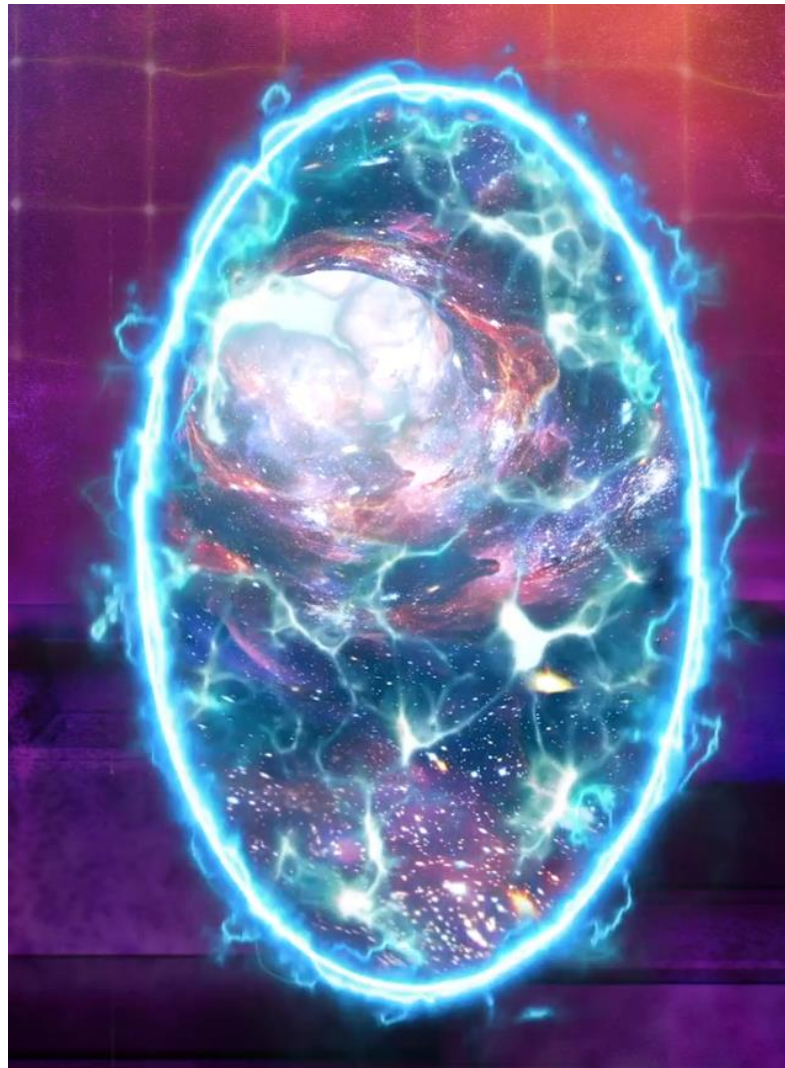


The name Easter comes from an ancient European goddess of the dawn called Eostre by the Anglo-Saxons and Ostara by the Germanic peoples. She is also known as Eostra, Eostrae, Eostar, Eastre, Easter, Estre, Eástre, and Austrá by various European peoples. Her name means "movement towards the rising sun" and is related to the Indo-European root word Aus which means "to shine".

The English words estrus and estrogen are also derived from her name. She was considered the goddess of the growing light and spring, associated with fertility and celebrated with a festival of rebirth. One story has her entertaining children by performing a trick that changed her pet bird into a rabbit. This rabbit then laid colored eggs that she gave to the children. Given the history of these ideas which date back to at least 2000 years before the Christian era, it should be no surprise that the original symbols and practices of Easter persist today, just as our ancestors once celebrated them.



The Symbolism of the Egg also has its roots in Sacred Geometry and Alchemy in the teachings of the Vesica Pisces or the Ichthys.

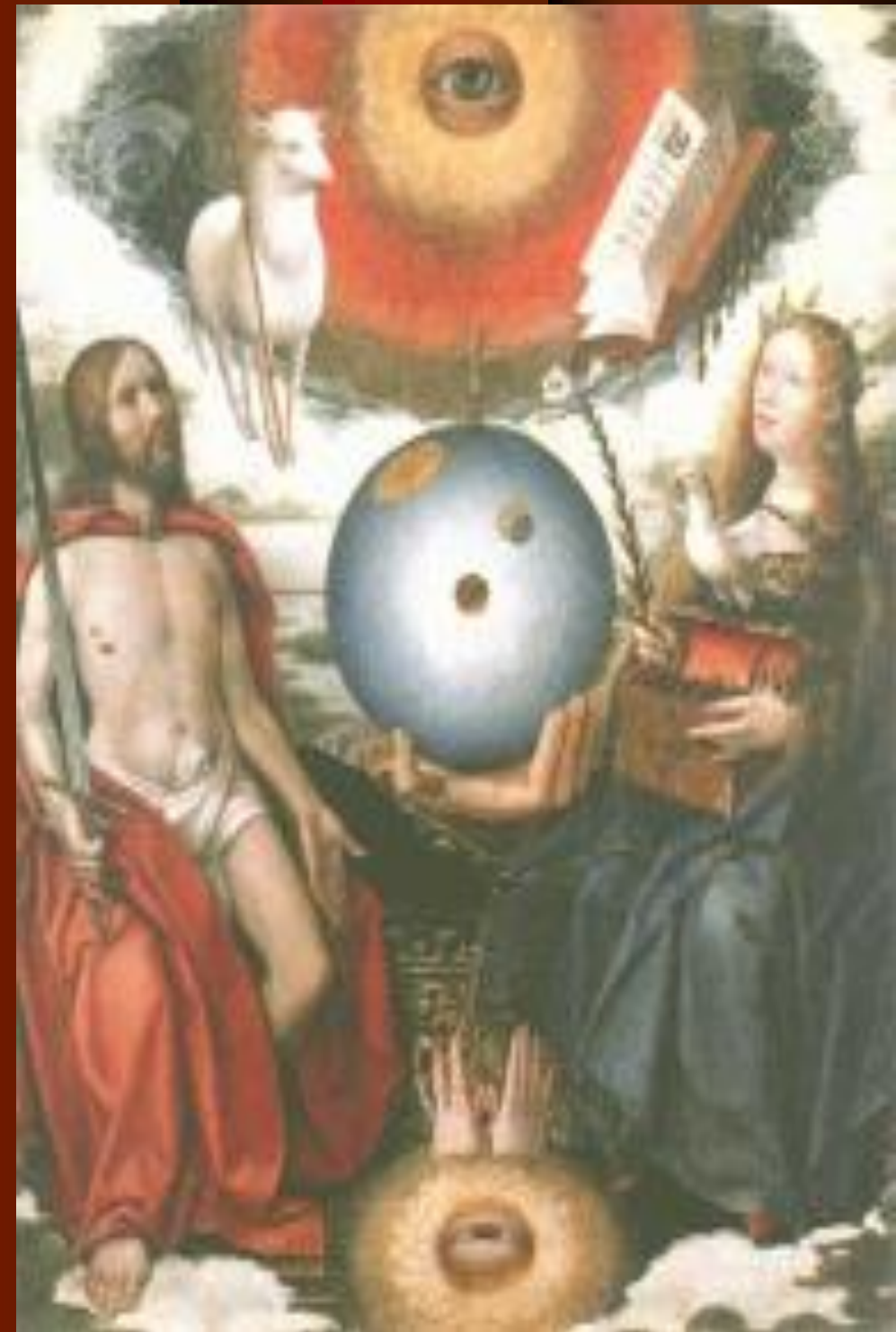


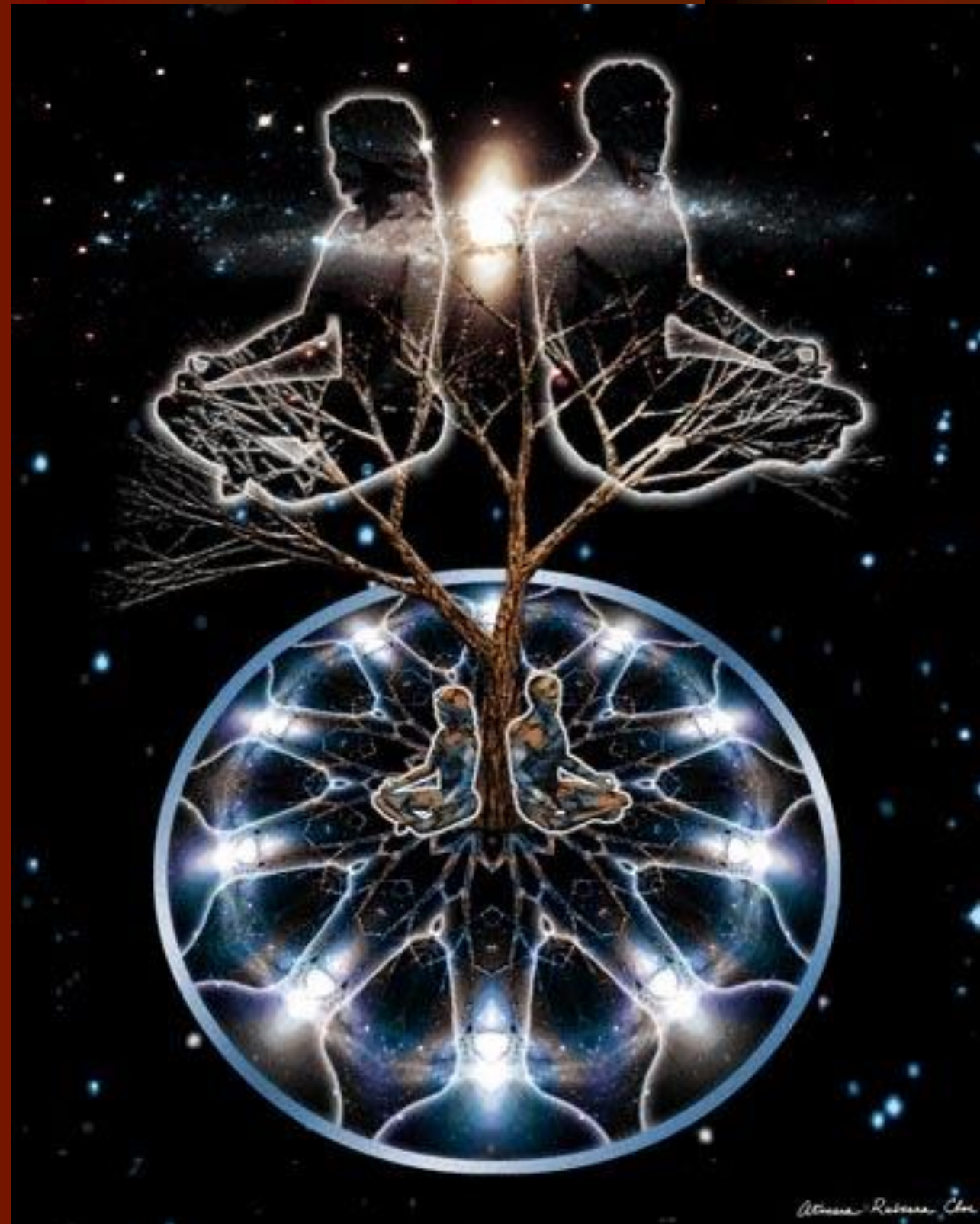
It is the sacred teaching and scientific fact that when 2 opposite energies come together, a portal to other dimensions is created. It's how our soul gets here.

This sacred marriage is working in our lives whenever we balance pairs of opposites, male and female, light and dark, heaven and earth, conscious and unconscious, pleasure and pain, ego and soul.



Yeshua taught balance between the sexes and (scandalously!) accepted females into his school. He and Mary Magdalene embodied and manifested the archetypes of divine masculine and divine feminine united in the sacred marriage. The sacred marriage is a process that occurs in the subconscious mind as well as in the collective unconscious of humanity.





Application

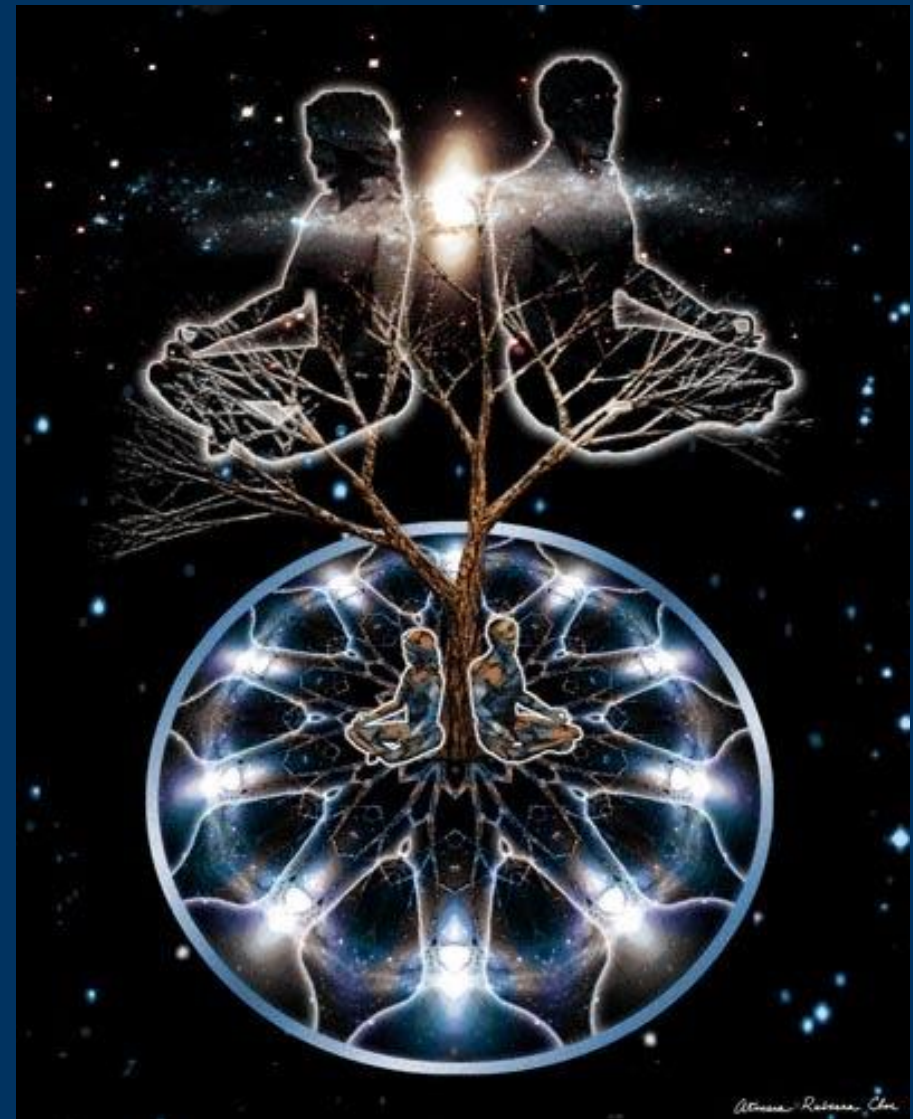
What needs renewal in your life?

What alchemical message is coming through for you as you dive deeper into the alchemical mysteries?



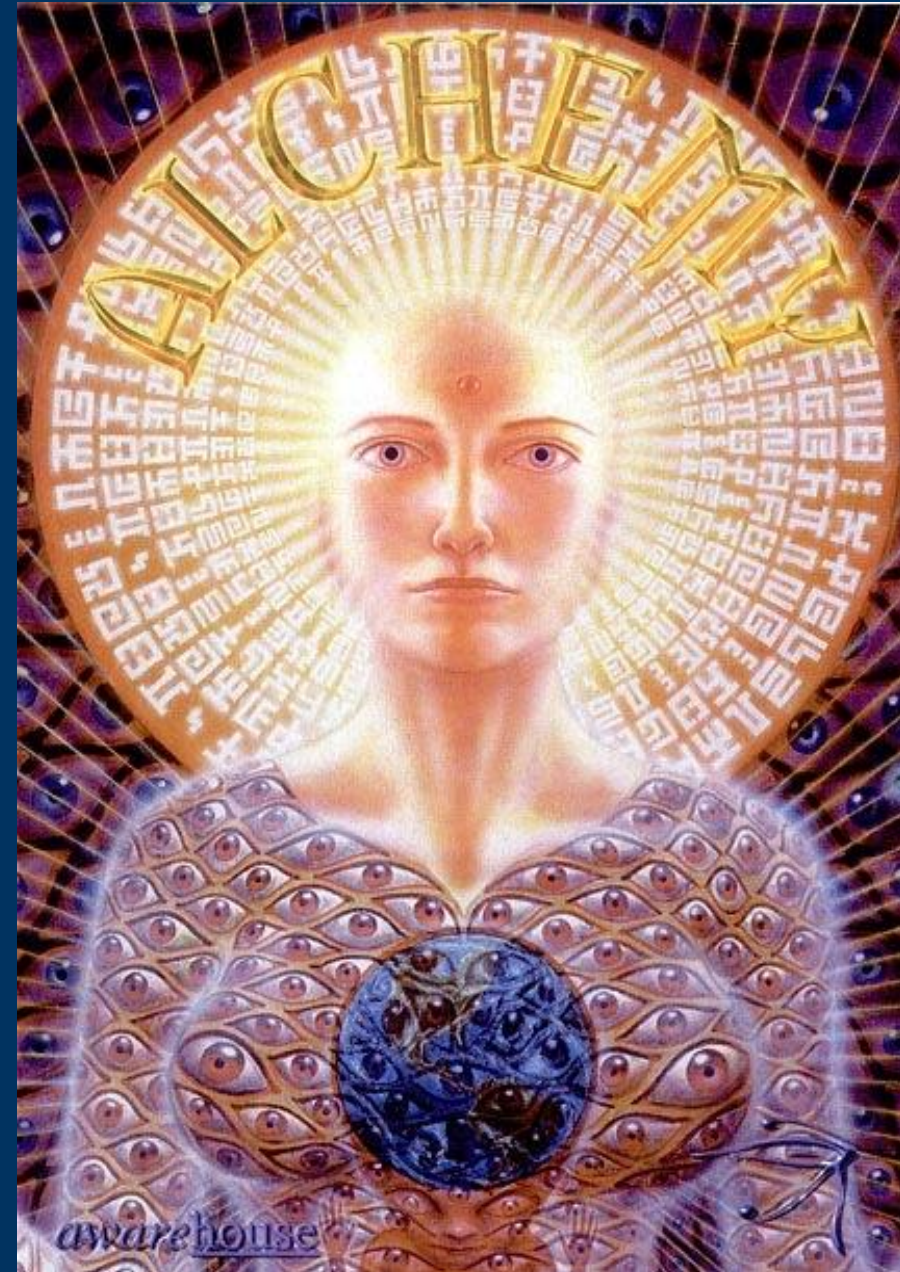
Any Integration Needed Now?

- male and female
- light and dark
- heaven and earth
- conscious and unconscious
- pleasure and pain
- ego and soul



Inner Light

- What does it need to turn up to a new level of illumination?
- Any other guidance?





Gratitude & Closure