

*Welcome
to the
New Earth
High Priestess
Process*





New Earth High Priestess clearing and elemental power activation with Earth.

Connect,
Call in Sacred Space,
Call on Oversoul,
Open to Receive





Open for the Divine Feminine Essence Flowing through You
as High Priestess Initiate

Earth High Priestess Clearing

What needs to be
cleared out for your
high priestess self to
have room to
expand in your life?

What have you been
holding on to that if
you released it could
make a big
difference in
everything?



Clearing

- Old ENERGY out of objects
- Clear old objects
- Physical Body
- Home, Office, Car
- Clothes
- Way you've been interacting with things in your life such as money, finances, or wealth.
- How's your wallet?

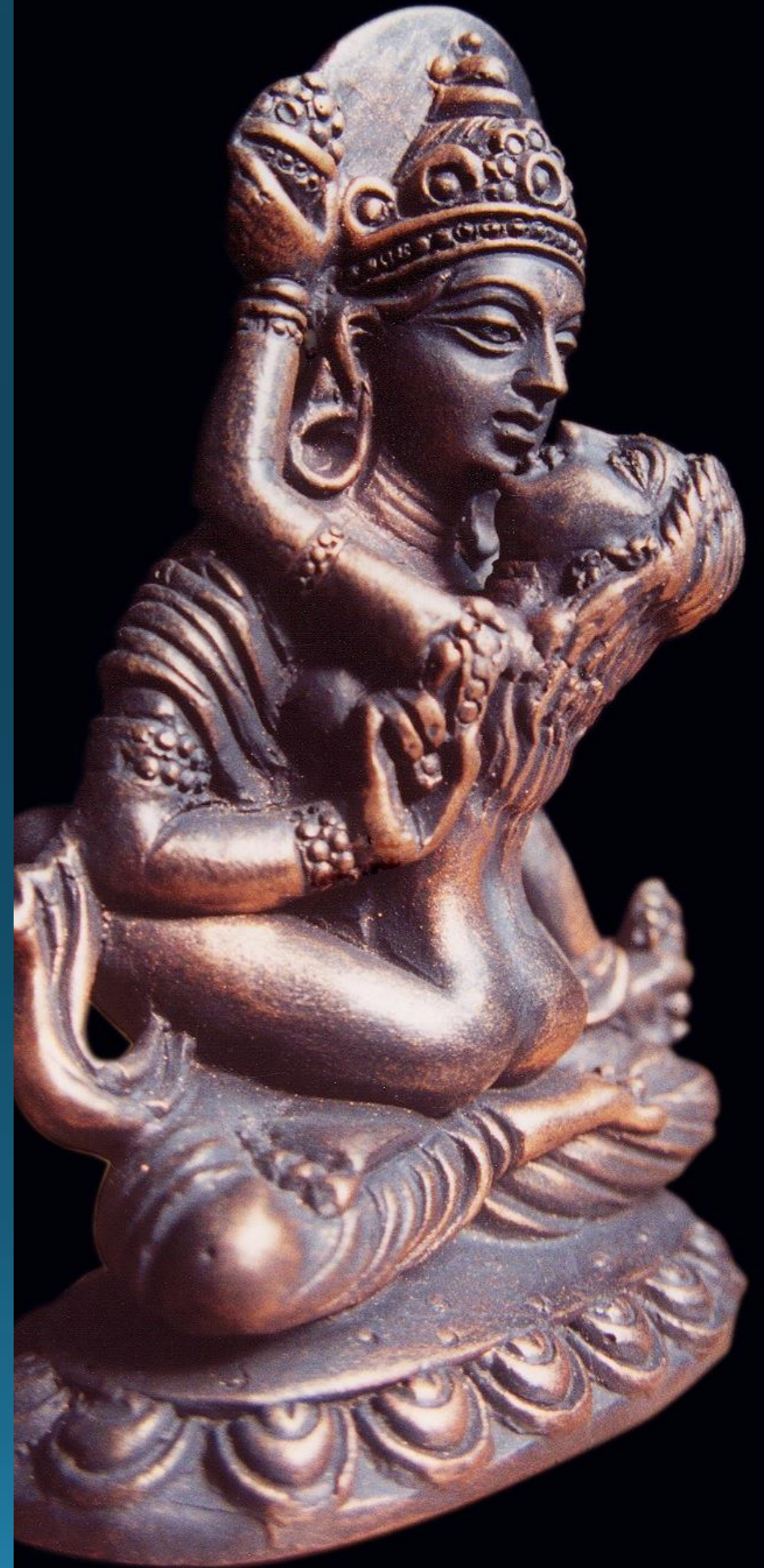


Clearing Guidance from Earth



Alchemy Core

- Sacred Marriage
- Spirit & Matter
- Feminine and Masculine
- Ego Stands Between this Union



Inner Masculine Ego
Driven Voice

Attitude toward
Inner Feminine

Ego States



Child Ego State

If our child consciousness or ego state is reacting, for example, we may demand that our needs get met right now by those around us. We may feel small and weak or guilty. We may be unwilling to take responsibility for the situation in which we find ourselves and become withdrawn, detached, distant, or overly insistent about our needs.



Adolescent Ego State

If the part of us that contains our adolescent energy reacts, we may sound sarcastic and feel rebellious. From this level of consciousness, we frequently act in ways that do not support our larger life vision. We may refuse to be told what to do. Sometimes we may clearly say we won't fulfill a request, or we may just passively avoid doing it. We may be unwilling to express how we truly feel about a situation and think others have control over our life.



Critical Parent Ego State

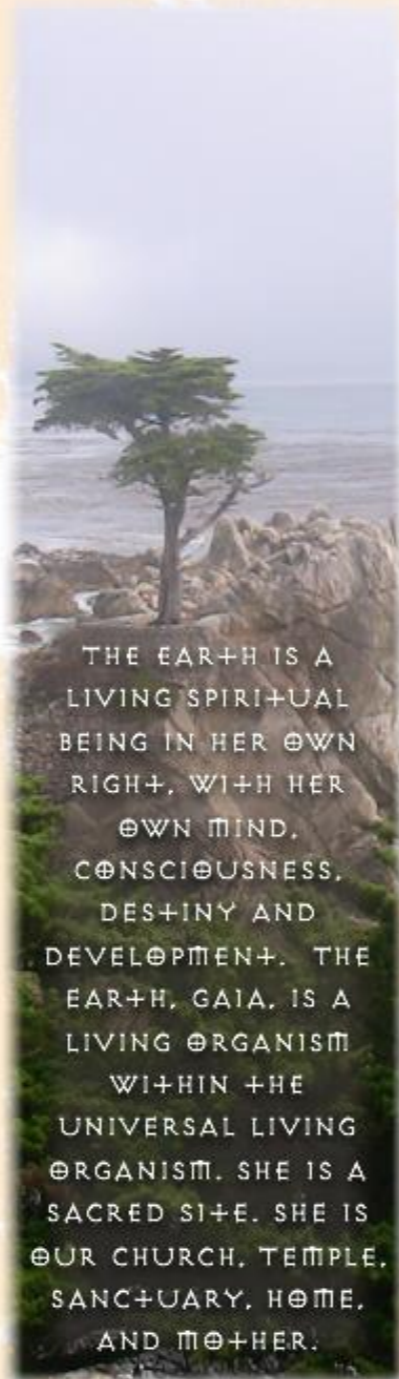
We sometimes approach life from our inner parent. This part of us can sound as though we know what is best for others, more than they know for themselves. From this ego place, we can be inflexible, hypercritical, disapproving, righteous, and judgmental with ourselves and with others. When functioning from our inner parent we also can try to defend, shield, and rescue those around us, thus becoming the overly responsible hero parent.



Adult Ego State

From our adult state, we are able to consider our options and respond effectively to a situation. We are connected to our own sources of wisdom -- our feelings, inner guidance, and intuition. We are able to take healthy responsibility, rather than too much or too little. Instead of acting out of unconscious emotional states from the past, we make choices about situations from the present moment.





THE EARTH IS A
LIVING SPIRITUAL
BEING IN HER OWN
RIGHT, WITH HER
OWN MIND,
CONSCIOUSNESS,
DESTINY AND
DEVELOPMENT. THE
EARTH, GAIA, IS A
LIVING ORGANISM
WITHIN THE
UNIVERSAL LIVING
ORGANISM. SHE IS A
SACRED SITE. SHE IS
OUR CHURCH, TEMPLE,
SANCTUARY, HOME,
AND MOTHER.

TEMPLE OF THE LIVING EARTH

Guiding Principles of Earth/Gaian-Centered Spirituality

Honor Earth/Gaia as a Sacred site and partake of her Fruit joyfully and gratefully. Honor the Life Force in ALL. Honor your body, hearth, and workplace as Temples of the Divine.

Live every moment as a Sacred Act in Alignment with Divine Source as you know and experience It.

Know Self as a unique, actualized, multi-dimensional, regenerative Being of unlimited creative and loving potential within the Cosmic Whole.

Live open-mindedly, thinking and feeling independently, for the Greatest Good. Unlearn false and outmoded teachings and conditionings. Gratefully exercise the gift of the right of free will, responsibly and honestly.

Live in Freedom by breaking through form into formless form into Spirit and Wholeness.

Know the Silence and merge with It. Honor the creative power of the Word. Avoid unnecessary unclear verbiage and waste of the priceless Breath of Life.

Live and speak the Highest Truth, as you know it, moment-to-moment, for the Highest Good. Honor and encourage the Highest Truth of others in the darkness and the light.

Stimulate inner awareness and multi-sensory perceptions to heighten communication with ALL LIFE and enhance Cosmic consciousness. Commune with Father Sky and Mother Earth as directly and respectfully as a Loving Child communes with Loving Parents.

Commit to the Sacred Marriage through inner union of the Divine Feminine and Divine Masculine, of feeling and thought.

Live responsibly in co-creative, co-operative partnership with the Earth, Nature and One Another.

Live in Balance, Beauty, Love, Harmony and Good Humor.

Live attentively. Trust, attune and respond to the synchronistic Life Process.

Live in the natural flow of Abundance, Simplicity and All Good Things. Give and receive generously.

LIVE LIFE FULLY AND GRATEFULLY! CELEBRATE CREATION!

© Nicole Christine 1995

magdalenemysteries.com

lisa-michaels.com

Earth Primary Power

From the time you are born your earthly body container grows and develops until you become strong enough to fully stand on your own in life as a fully individuated being.

It is only through the power of your individual “body container” that you receive the gift of creating on your own. Expressing the unique way Spirit moves through you into form. As you grow your job is to learn to stand on your “own two feet” in the world.

REMEMBER – YOUR HIGH PRIESTESS FEET ARE BIGGER!



Axis Collapse & Stand Upright





Level Two Activation: *Alignment*
Activate the Vertical Axis as a High Priestess

Activate Earth's Primary Power as a High Priestess

- Earth is literally the ground you stand on.
- You are learning to stand your ground...standing on your own as an individuated spark of Spirit creating in the world of form.
- Dance to activate Earth's Primary Power to Stand on Your Own as a High Priestess.
- Activate Alignment with the Vertical Axis.
- Connect to your legs after the dance and see if they have anything to tell you about standing on your own in life.





Journal Your Insights

Contribute to
Your Tracking Sheet

Gratitude
&
Closure

