

WELCOME TO NEW EARTH CREATRIX CIRCLE

MODULE 14
SEVENTH STAGE OF ALCHEMY:
COAGULATION





CALL IN SACRED SPACE

TRULY WITHOUT DECEIT, CERTAIN, AND MOST VERITABLE.

THAT WHICH IS BELOW CORRESPONDS TO THAT WHICH IS ABOVE,
AND THAT WHICH IS ABOVE CORRESPONDS TO THAT WHICH IS BELOW
TO ACCOMPLISH THE MIRACLES OF THE ONE THING.
AND JUST AS ALL THINGS COME FROM THIS ONE THING
THROUGH THE MEDITATION OF ONE MIND,
SO DO ALL CREATED THINGS ORIGINATE FROM THIS ONE THING
THROUGH TRANSFORMATION.

ITS FATHER IS THE SUN;
ITS MOTHER THE MOON.
THE WIND CARRIES IT IN ITS BELLY.
ITS NURSE IS THE EARTH.
IT IS ORIGIN OF ALL,
THE CONSECRATION OF THE UNIVERSE.
ITS INHERENT STRENGTH IS PERFECTED,
IF IT IS TURNED INTO EARTH.

SEPARATE THE EARTH FROM HEAVEN,
THE SUBTLE FROM THE GROSS.
GENTLY AND WITH GREAT INGENUITY.
IT RISES FROM EARTH TO HEAVEN
AND DESCENDS AGAIN TO EARTH,
THEREBY COMBINING WITHIN ITS
THE POWER OF BOTH THE ABOVE AND THE BELOW.

THUS YOU WILL OBTAIN THE GLORY OF THE WHOLE UNIVERSE,
ALL OBSCURITY WILL BE CLEAR TO YOU.
THIS IS THE GREATEST FORCE OF ALL POWERS,
BECAUSE IT OVERCOMES EVERY SUBTLE THING
AND PENETRATES EVERY SOLID THING.

IN THIS WAY WAS THE UNIVERSE CREATED,
FROM THIS WILL COME MANY WONDROUS APPLICATIONS,
BECAUSE THIS IS THE PATTERN.

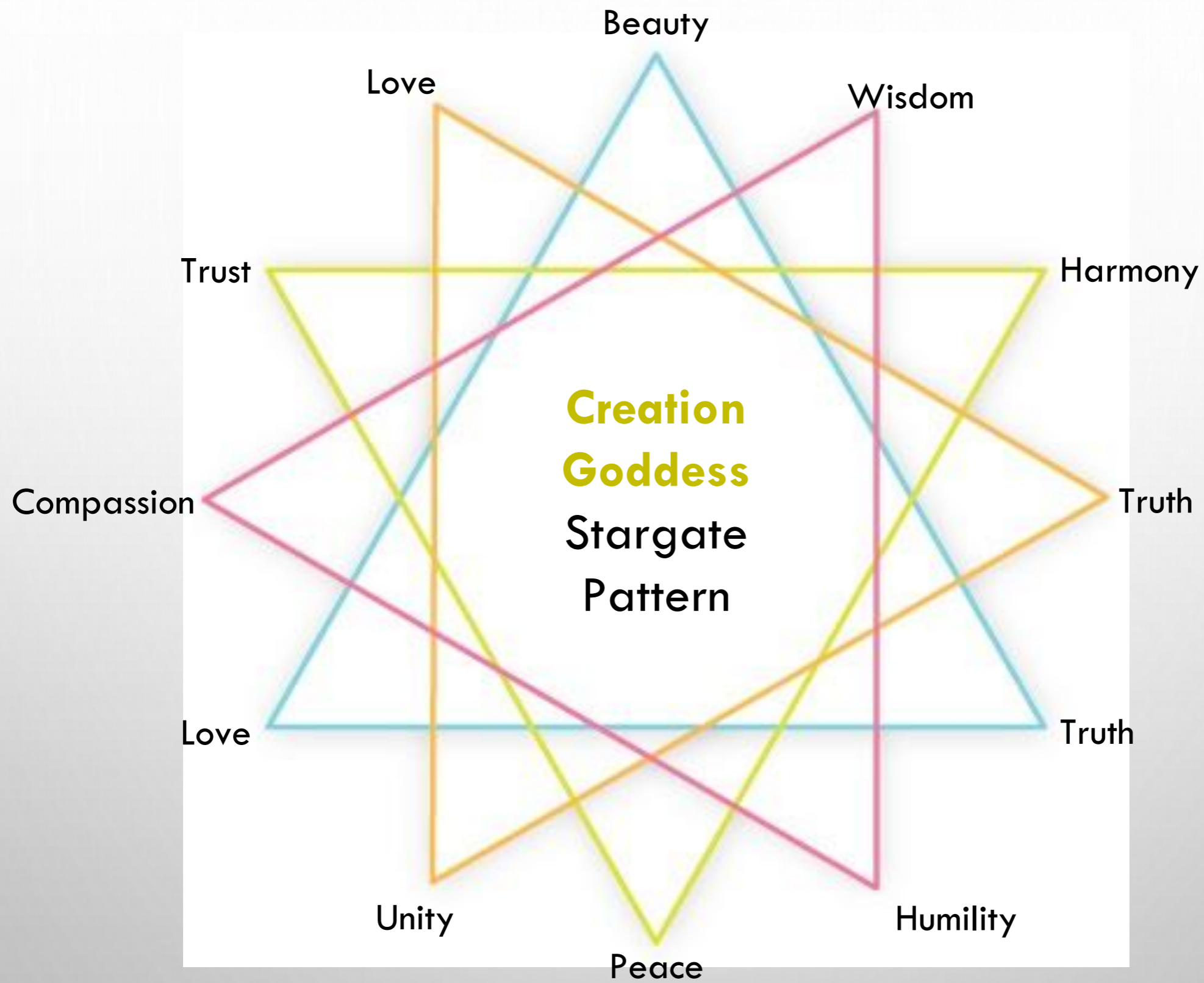
THEREFORE AM I CALLED THRICE GREATEST HERMES,
HAVING ALL THREE PARTS OF THE WISDOM OF THE WHOLE UNIVERSE...
HEREIN HAVE I COMPLETELY EXPLAINED THE OPERATION OF THE SUN.



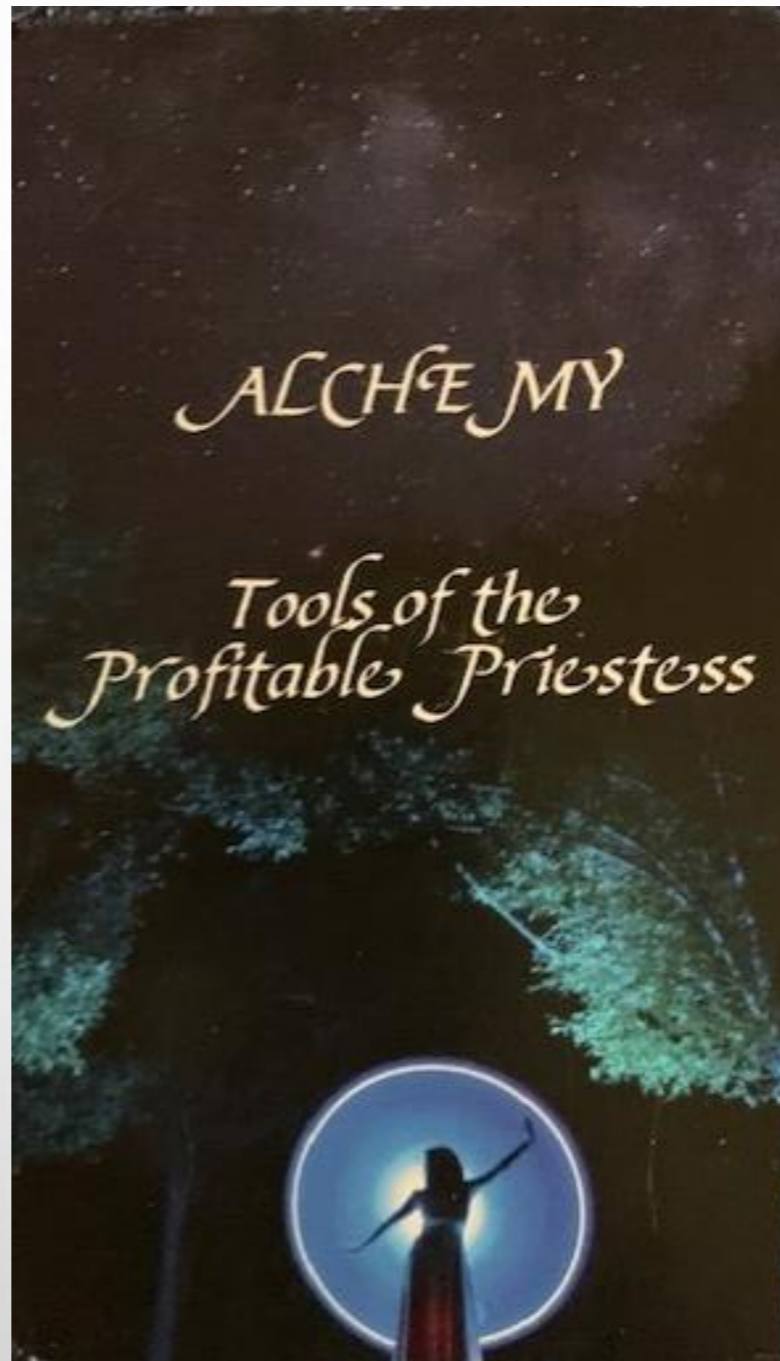
MARIA PROPHETISSA

Emerald Tablet by Hermes
Trismegistus, Thoth





SPIRITUAL/CREATIVE/FINANCIAL FLOW



Personally and Collectively



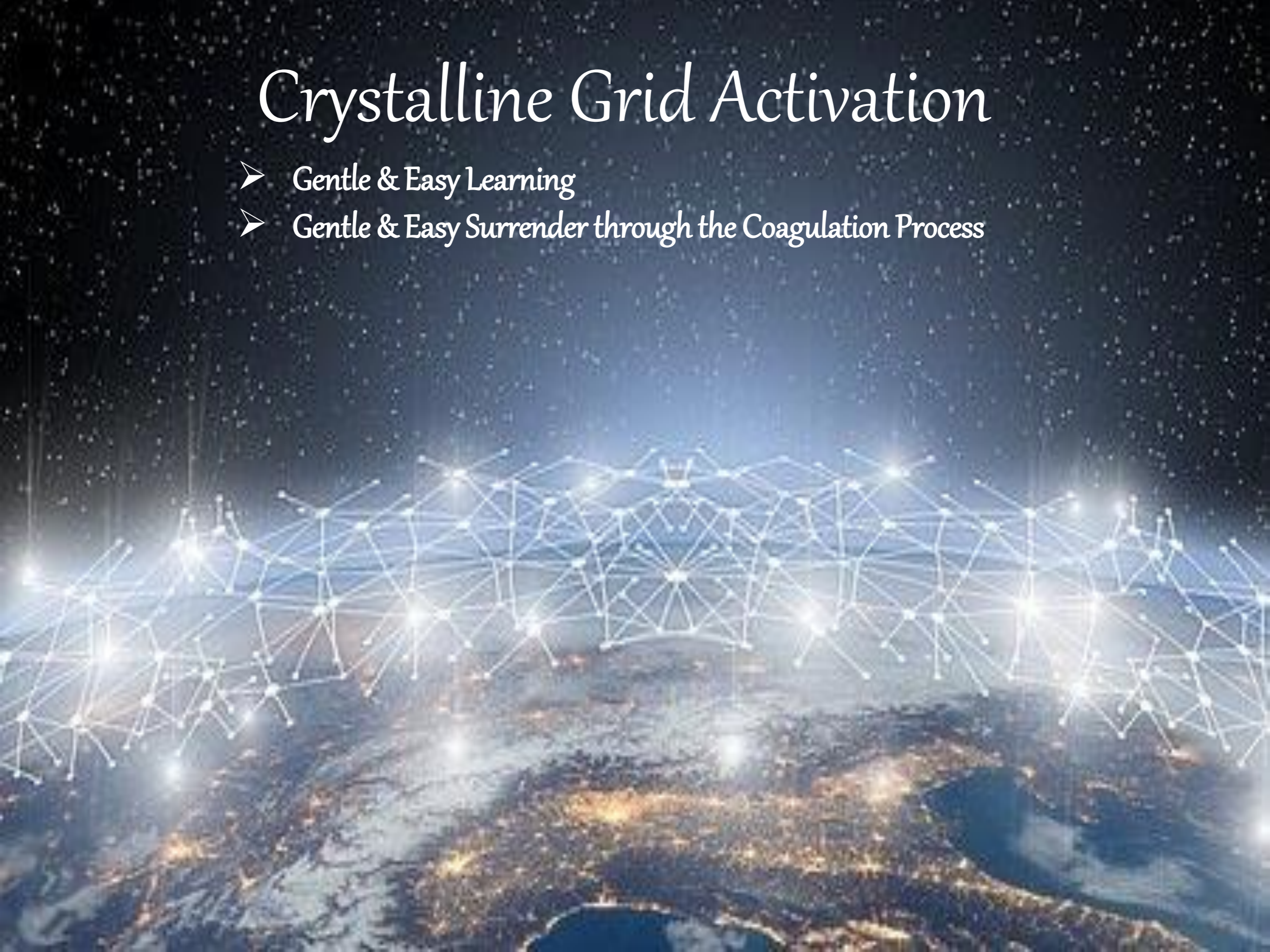
OPEN TO
RECEIVE
ANCIENT
ALCHEMICAL
WISDOM
TEACHINGS.



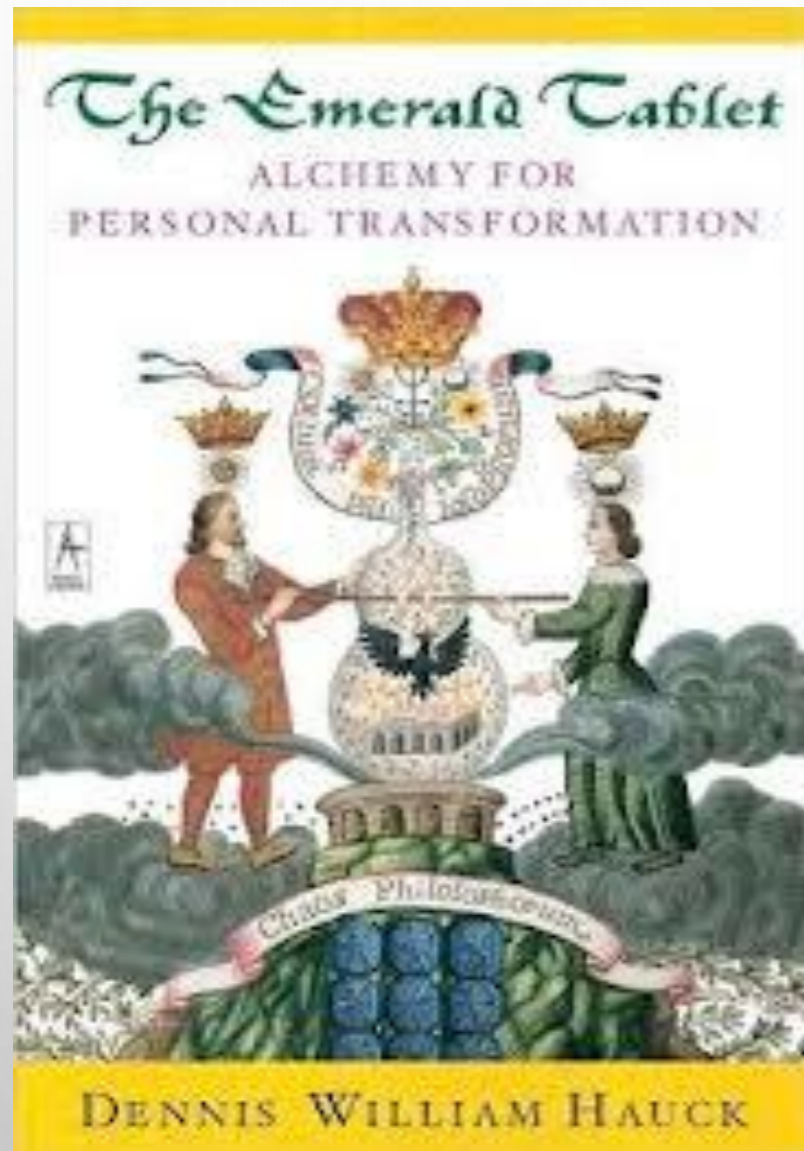
ANYTHING ABOUT
DISTILLATION TO
SHARE?

Crystalline Grid Activation

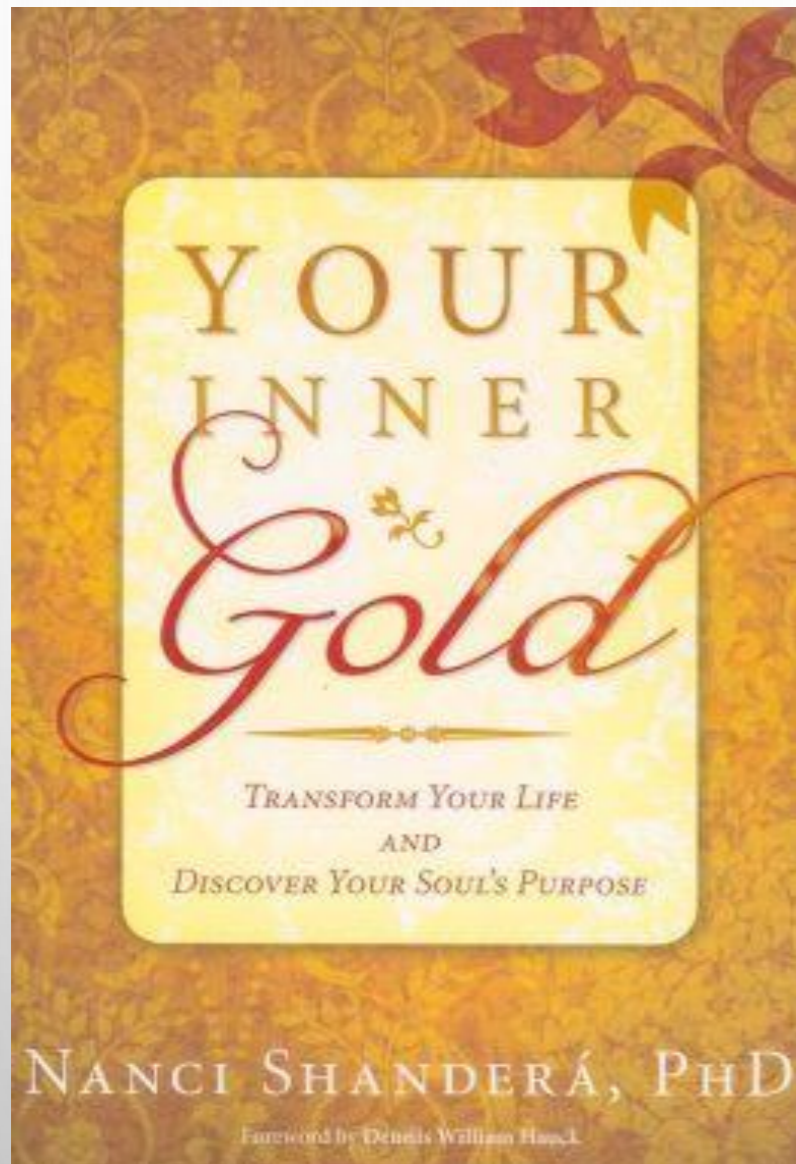
- Gentle & Easy Learning
- Gentle & Easy Surrender through the Coagulation Process



AT THE SEVENTH STEP OF
COAGULATION,
YOU ARE BORN INTO THE
UNIVERSE AND HAVE ARRIVED
AT A NEW PLATEAU, THE
GREATER MYSTERIES OF THE
ANCIENTS.

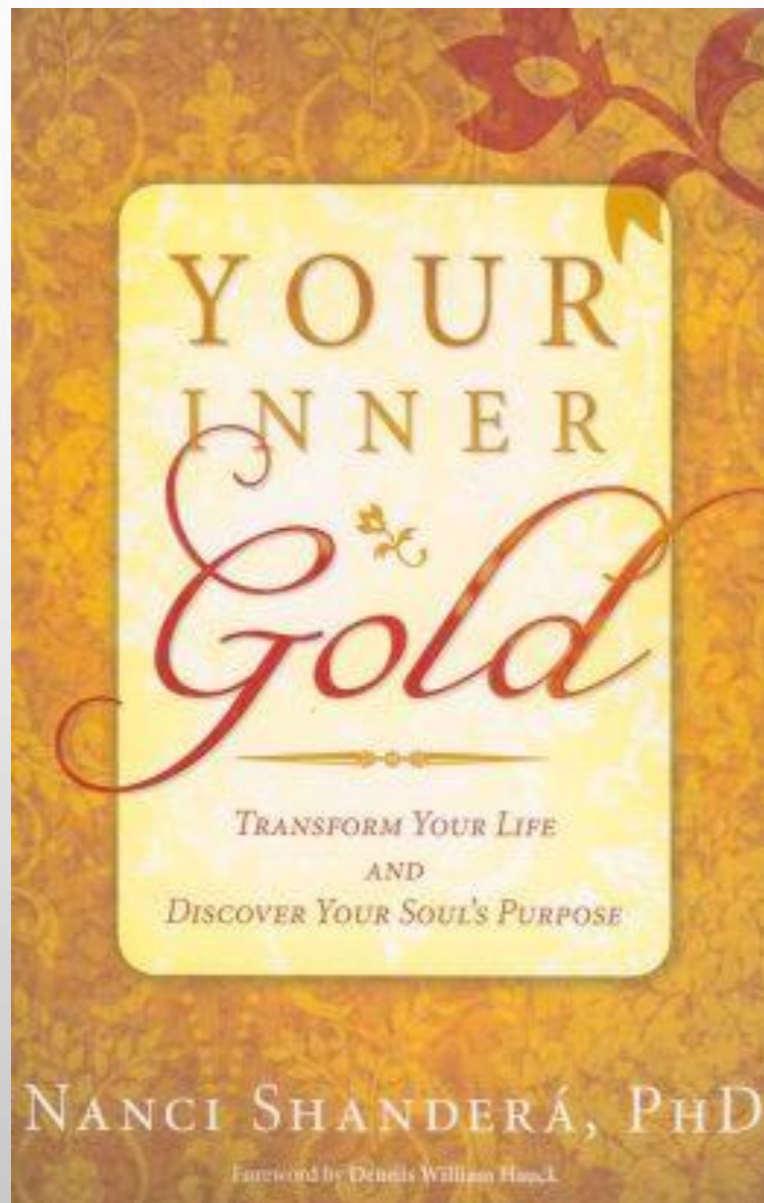


THIS TRUE ATONEMENT
(AT-ONE-MENT) WITH THE
MIND OF GOD/DESS, AND IT
ALLOWS YOU TO ENTER THE
“GRADUATE SCHOOL” OF
SPIRITUAL INSTRUCTION.



IN ALCHEMY, A COAGULATED PERSON IS A COMPLETE, WHOLE BEING WHOSE CONSCIOUSNESS ON ALL LEVELS, WHETHER PHYSICAL, MENTAL, OR EMOTIONAL IS SPIRITUALLY INTEGRATED.

THIS PERSON HAS DISCOVERED WHAT ALCHEMISTS CALL THE PHILOSOPHER'S STONE, THE QUINTESSENTIAL PROOF OF ALCHEMICAL ENLIGHTENMENT, BY HAVING TRAVELED THROUGH ALL THE STAGES, OVER AND OVER, UNTIL THE WHOLE BEING IS PERFECTED.

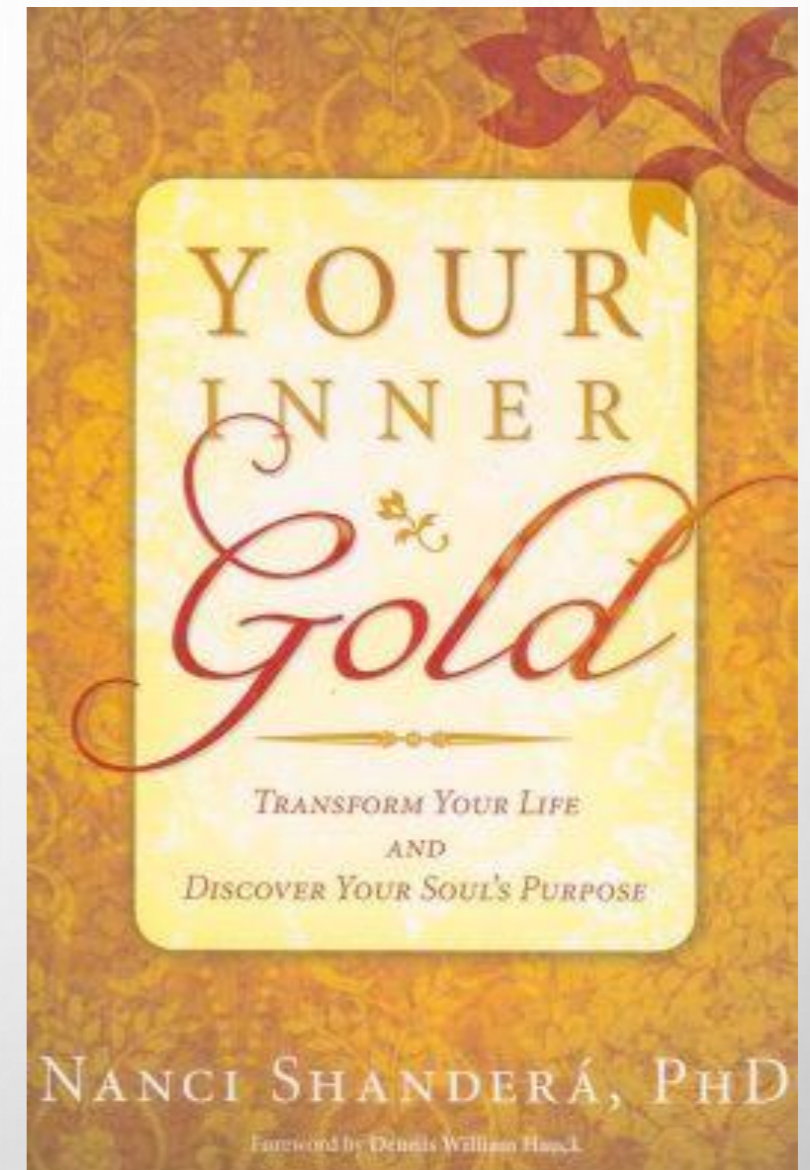


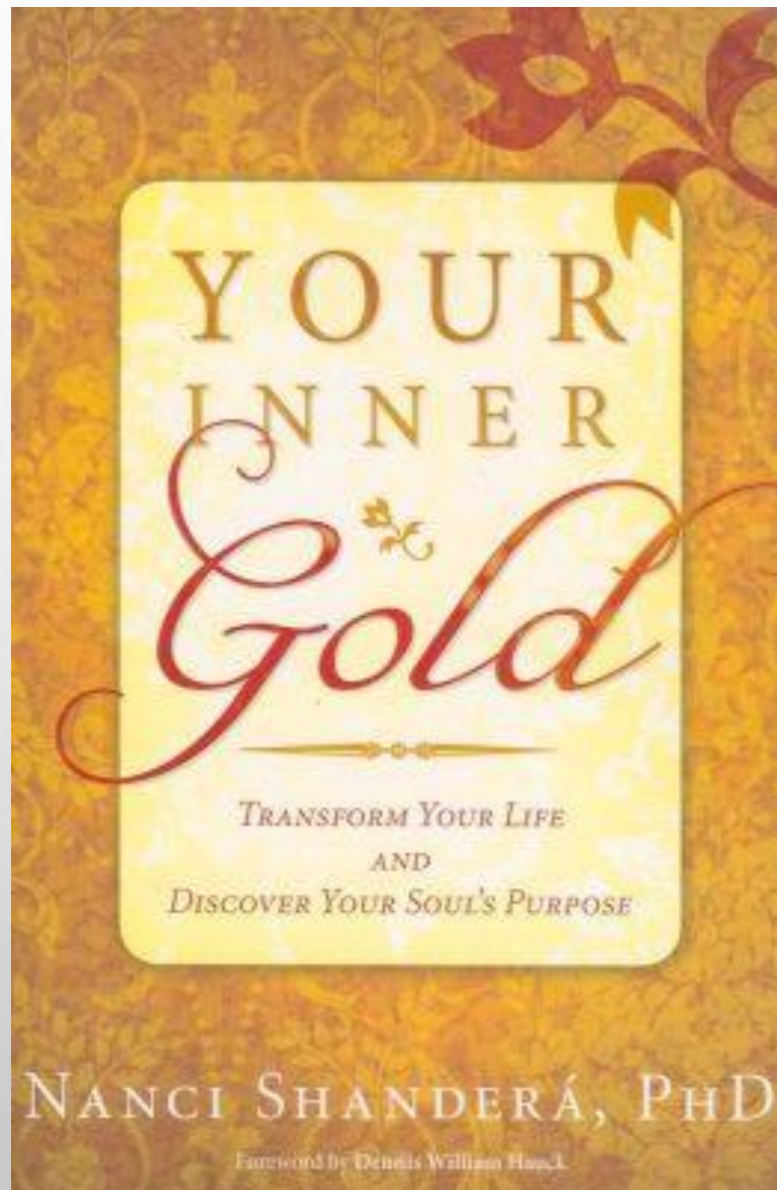
ONE WITH A PURIFIED, OR
COAGULATED, CONSCIOUSNESS LIVES
IN A REALITY WHERE REACTIVITY AND
FEAR HAVE
BEEN REPLACED BY A GENUINE, SOLID
BELIEF IN UNITY WITH HIGHER
CONSCIOUSNESS, THE DIVINE.

THE COAGULATED PERSON PERCEIVES
LIFE VERY DIFFERENTLY THAN DO
ORDINARY PEOPLE—HE OR SHE LIVES
IN A REALITY WHERE REACTIVITY AND
FEAR HAVE BEEN REPLACED BY
UNIFIED CONSCIOUSNESS WITH THE
DIVINE.

WE DON'T GAIN THE PHILOSOPHER'S STONE—HIGHER CONSCIOUSNESS—EASILY. WE HAVE TO FIGHT THROUGH AND EARN IT BY WORKING ALL THE PROCESSES OF TRANSFORMATION: *CALCINATION*: INCINERATING THE EGO'S CONTROL; *DISSOLUTION*: REDEEMING EMOTION AND INTUITION; *SEPARATION*: DISCOVERING DISCERNMENT AND WISDOM; *CONJUNCTION*: OPENING THE HEART THROUGH BALANCING THE INNER MASCULINE AND FEMININE; *FERMENTATION*: INTEGRATING LOWER LEVELS OF CONSCIOUSNESS WITH THE HIGHER THROUGH FIRE AND FERMENT; *DISTILLATION*: DISTILLING ALL THE WORK ALREADY DONE AND DEVELOPED TO A PURE ESSENCE; AND *COAGULATION*: SURRENDERING INTO A NEW CONSCIOUSNESS OF WHOLENESS.

EVERY ONE OF THESE PROCESSES REQUIRES A SACRIFICE, GENERALLY CONSISTING OF OLD, OUTDATED, AND CHERISHED BELIEFS.

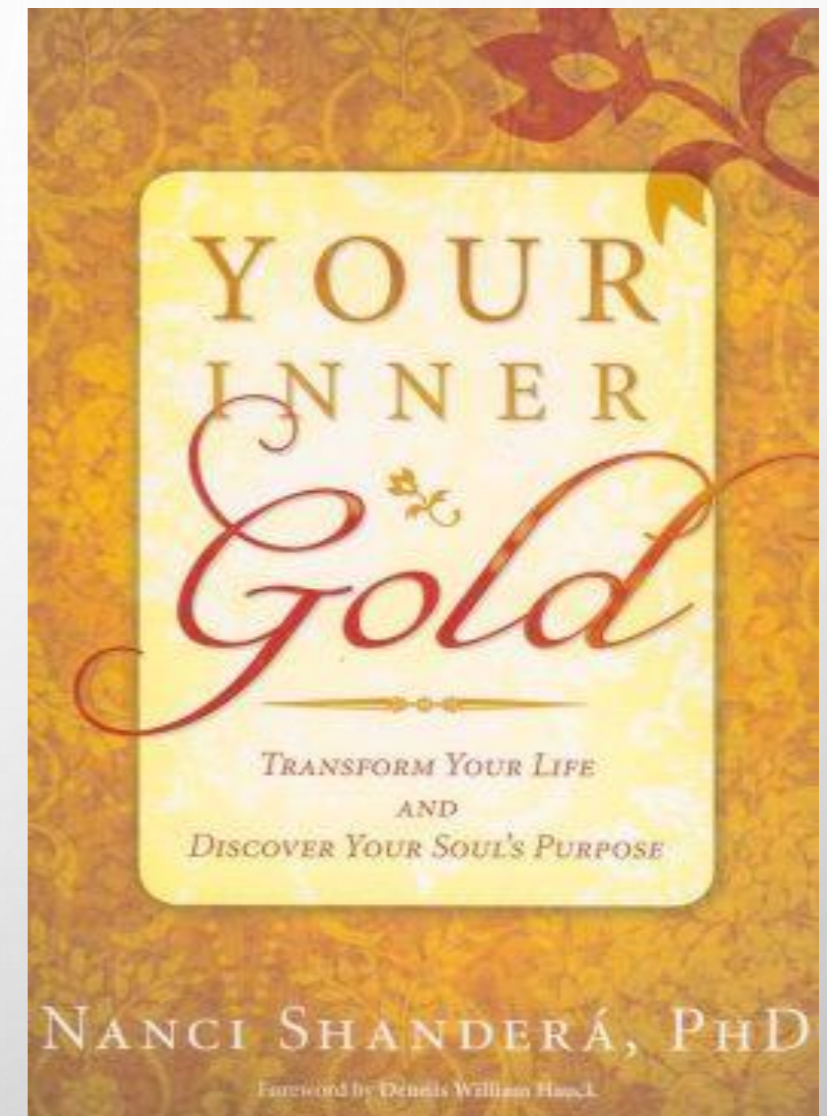


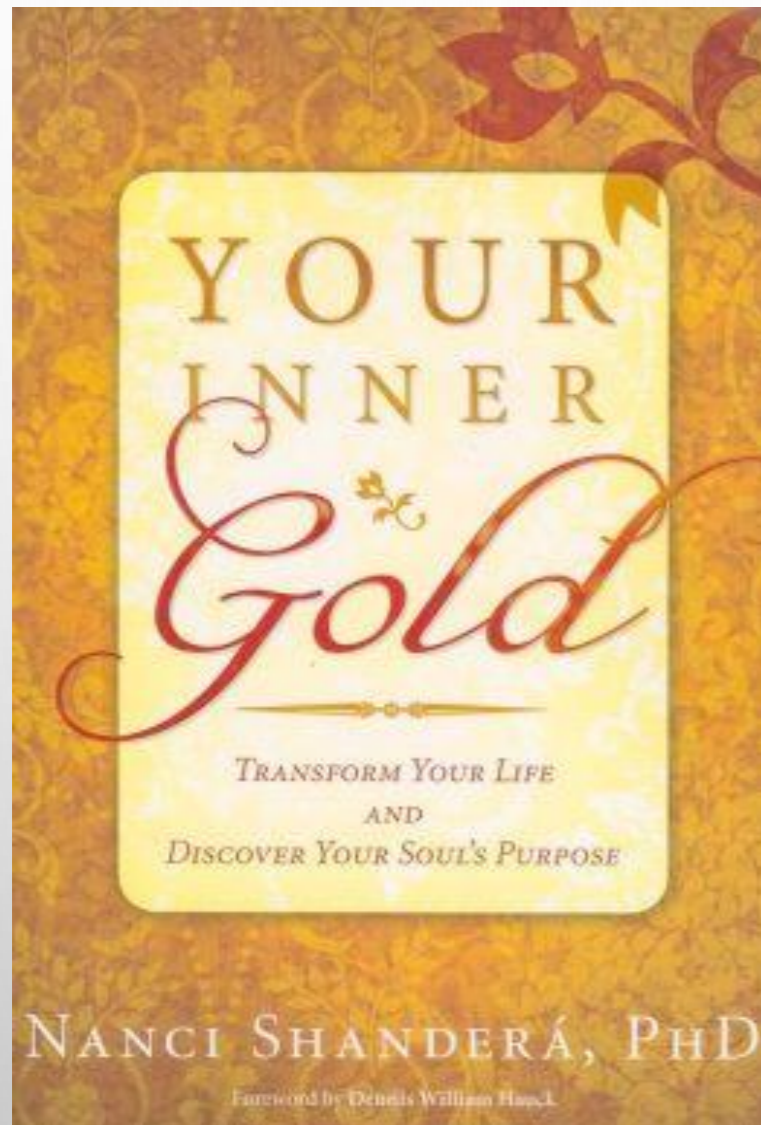


BY LEARNING TO EXCHANGE OLD,
FEAR-BASED ATTITUDES AND
PERCEPTIONS FOR NEW, LIFE-GIVING
ONES, WE ENTER THE MYSTERY OF
SACRIFICE.

THE ACTUAL DEFINITION OF THE
WORD *SACRIFICE* IS “TO MAKE
SACRED.” TRUE SACRIFICE
TRANSMUTES LESS DEVELOPED
LEVELS OF CONSCIOUSNESS INTO AN
AWAKENED STATE. IN MOST CASES,
SACRIFICE REQUIRES THAT THE EGO’S
DESIRES, PROTECTIONS, AND
CONTROLS ARE RELINQUISHED FOR
THE GREATER GOOD.

When an old house is being remodeled, old memories and energies of times and people gone by are stirred up as the walls are ripped off and the foundation is repurposed. Without conscious awareness of how our traumas affect everything in profound, far-reaching ways, combined with the belief that we have been harmed by others and the refusal to sacrifice those beliefs, we are haunted by the effects of negativity that radiate through our lives. Elizabeth Gilbert, author of *Eat, Pray, Love*, writes: "... I can see exactly where my episodes of unhappiness have brought suffering or distress or (at the very least) inconvenience to those around me. The search for contentment is, therefore, not merely a self-preserving and self-benefitting act, but also a generous gift to the world. Clearing out all your misery *gets you out of the way*. You cease being an obstacle, not only to yourself but to anyone else. Only then are you free to serve and enjoy other people." ¹⁴



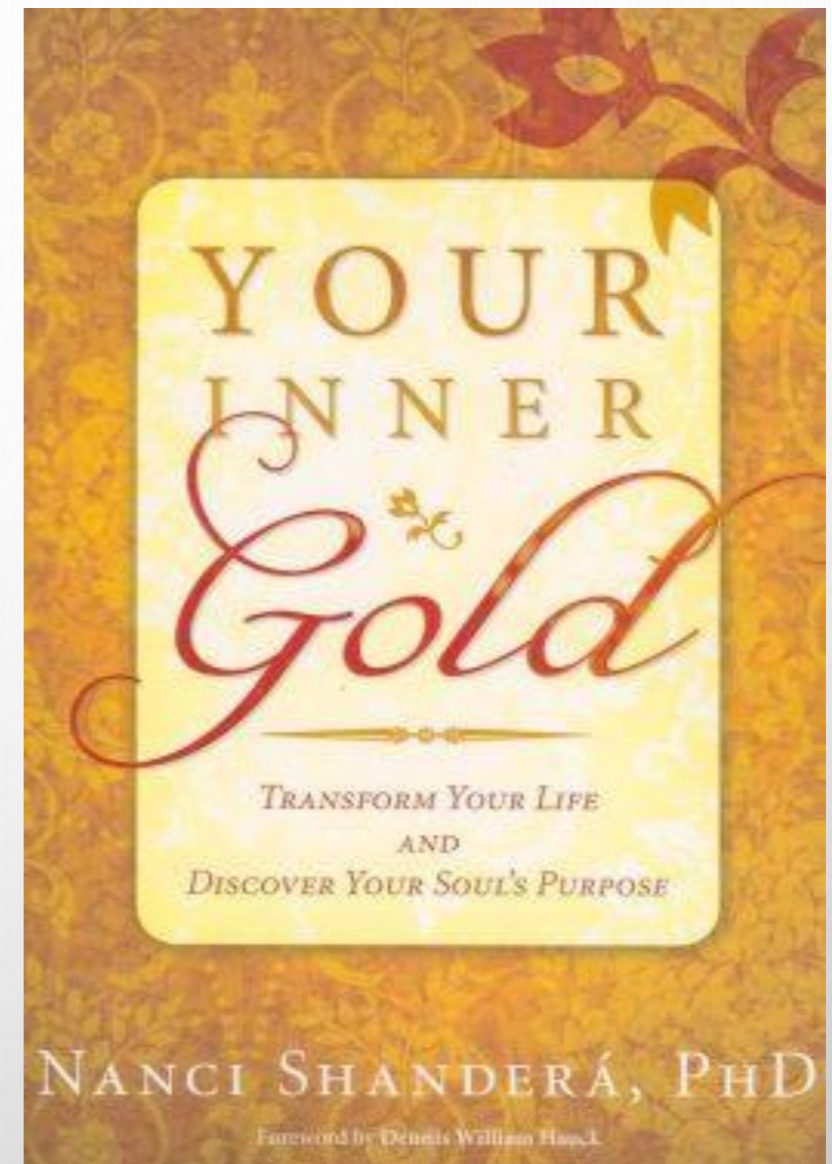


EVERYTHING WE DO, SAY, THINK,
OR FEEL HAS AN EFFECT ON
OURSELVES AND OTHERS. WHEN
SOMETHING IS TO BE RENEWED,
REVISED, REMODELED, REBUILT,
RECTIFIED, REPAIRED, RESTORED,
OR REJUVENATED, IT REQUIRES
SACRIFICE, WHETHER SIMPLE OR
PROFOUNDLY DIFFICULT.

SPECIFICALLY, IT REQUIRES
ENGAGEMENT WITH THE HEART,
OR ELSE IT IS NOT AN AUTHENTIC
AND COMPLETE SACRIFICE. TRUE
SACRIFICE REQUIRES
LOVE—OF SELF AND OTHERS.

SOME OF US ARE EMPATHIC, WHICH CAN BE DIFFICULT BECAUSE WE MAY FEEL OTHERS' PAIN TWICE AS GREATLY AS OUR OWN. THE KEY IS LEARNING THE DIFFERENCE BETWEEN OUR OWN FEELINGS AND REACTIONS AND THOSE OF OTHERS SO WE TRANSMUTE THEIR SUFFERING RATHER THAN TAKING IT ON AS OUR OWN.

THIS HAS ALWAYS BEEN A CHALLENGE FOR HEALERS AND CAREGIVERS BECAUSE OF THEIR EMPATHIC NATURE. BUT IT IS A HIGHER WORK WHEN WE CAN FOCUS ON THE OTHER'S HIGHEST TRUTH. THIS FREES THEM TO FACE THEIR OWN ISSUES WITHOUT HAVING BEEN RESCUED BY OUR TAKING ON THEIR PAIN.



Dematerialization and getting into heaven is not the final stage of alchemy. The eighth stage is a step off the ladder of transformation and a return to where we started. “Its inherent Strength is perfected,” we are told, “if it is turned into Earth.”

The successful Coagulation is only made real if it “descends again to Earth” and enters into the processes of projection and multiplication to perfect others.

It is the return of Buddha, Mohammad, Christ, (Tara, Quan Yin, Mary’s) and all the saints. In this view, we are truly the Salt of the earth.



Symbols at this stage represent the joining of opposites on all levels necessary at this stage.

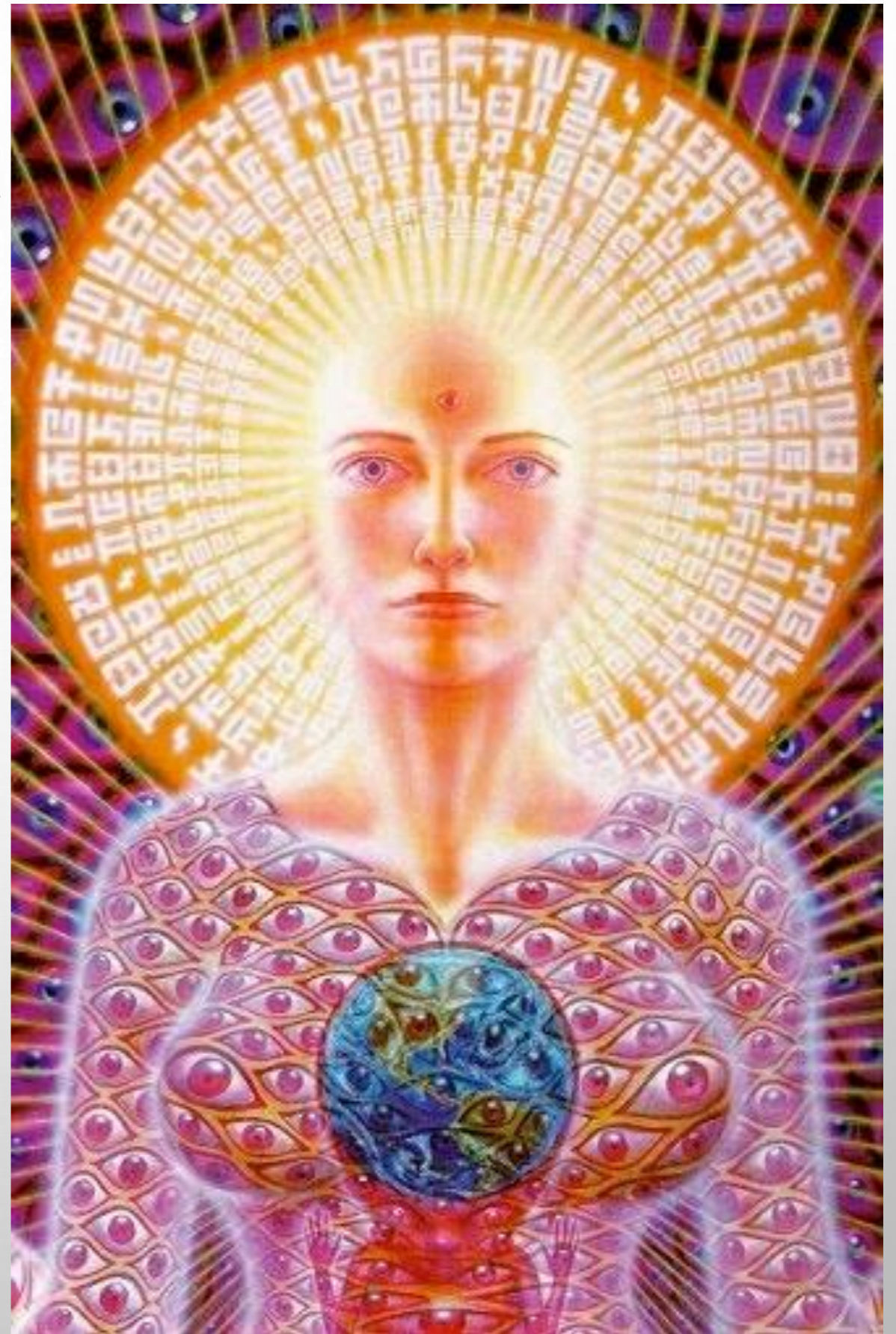
The alchemist deliberately slows down the pace of her life to allow feelings and intuition to surface. In this way, she stays connected to a newly discovered Presence within.



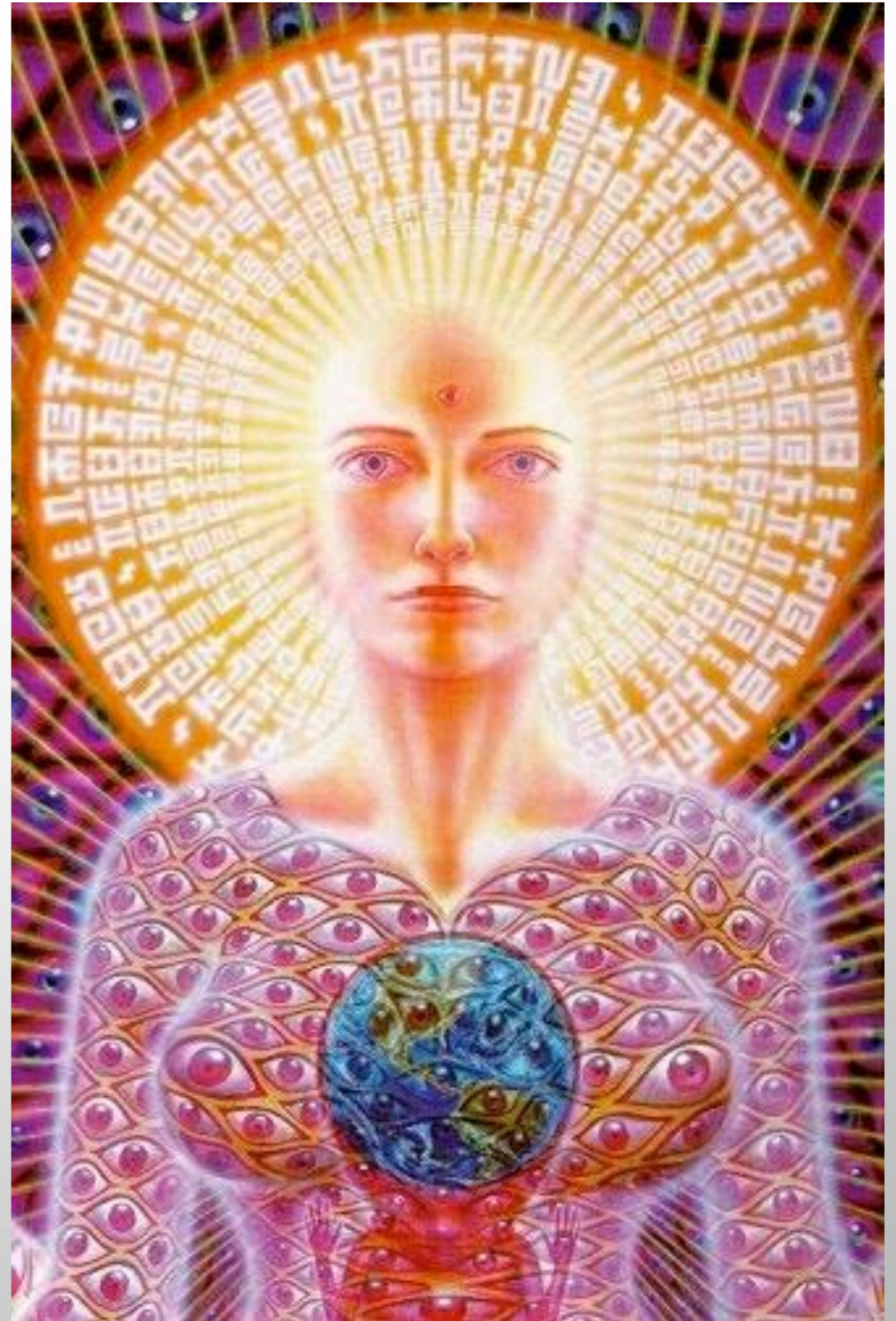
The transcendent body or the light body represents the union of the personal and transpersonal realms.

This Body of Light is the ultimate golden treasure.

The subtle body resides in an imaginal realm connected to the archetypal dimension in which the individual soul connects to the world soul or vertical axis of reality.



This middle ground which exists between the stars above and the stars within. By differentiating this middle ground, by creating this imaginal dimension in which to survive, one connects with nature and the cosmos, both the Below and the Above.





Psychologically, the Phoenix is the resurrected personality seen as a successful individuation resulting in peace of mind, heightened energy, and a free-flowing adaptability to new situations.

Coagulation Meditation

FULLY
CLAIMING
YOUR
DIVINITY



Divine Expression Dance



GRATITUDE GROUND & CLOSE

