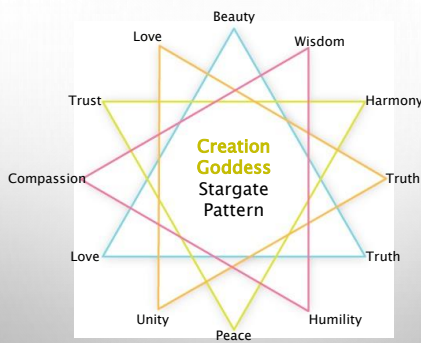


TO THE STARMAIDEN CREATION GODDESS CIRCLE

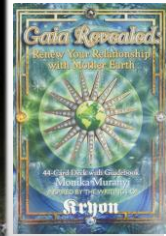
MODULE 13
SEVENTH STAGE OF ALCHEMY:
COAGULATION



CALL IN SACRED SPACE



SPIRITUAL/CREATIVE/FINANCIAL FLOW



Personally and Collectively

THAT WITHOUT WHICH CREATION AND LIFE WOULD BE
 THIS TABLET IS BELIEVED TO BE THE PROPERTY OF THE GODDESS
 AND WAS FOUND BY HER PUPILS IN THE TEMPLE OF
 HERMIS AT THE CITY OF SYRACUSE IN THE ISLAND OF SICILY
 TO DO AS CREATION GODDESS, THE TABLET SHOULD BE
 KEPT IN THE TEMPLE OF HERMIS AT THE CITY OF SYRACUSE
 IN THE ISLAND OF SICILY
 THE TABLET IS THE PROPERTY OF THE GODDESS
 AND WAS FOUND BY HER PUPILS IN THE TEMPLE OF
 HERMIS AT THE CITY OF SYRACUSE IN THE ISLAND OF SICILY
 TO DO AS CREATION GODDESS, THE TABLET SHOULD BE
 KEPT IN THE TEMPLE OF HERMIS AT THE CITY OF SYRACUSE
 IN THE ISLAND OF SICILY
 THE TABLET IS THE PROPERTY OF THE GODDESS
 AND WAS FOUND BY HER PUPILS IN THE TEMPLE OF
 HERMIS AT THE CITY OF SYRACUSE IN THE ISLAND OF SICILY
 TO DO AS CREATION GODDESS, THE TABLET SHOULD BE
 KEPT IN THE TEMPLE OF HERMIS AT THE CITY OF SYRACUSE
 IN THE ISLAND OF SICILY



MARIA PROPHETISSA



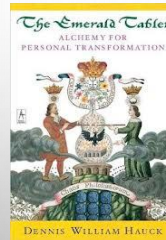
Emerald Tablet by
Hermes Trismegistus,
Thoth

Open to
Receive

Ancient
alchemical
wisdom teachings.

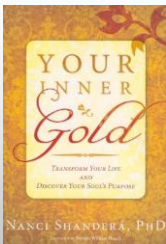


ANYTHING ABOUT
DISTILLATION TO
SHARE?



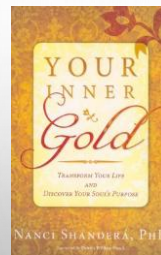
AT THE SEVENTH STEP OF
COAGULATION,
YOU ARE BORN INTO THE
UNIVERSE AND HAVE ARRIVED
AT A NEW PLATEAU, THE
GREATER MYSTERIES OF THE
ANCIENTS.

THIS TRUE ATONEMENT (AT-
ONE-MENT) WITH THE MIND
OF GOD/DESS, AND IT ALLOWS
YOU TO ENTER THE
“GRADUATE SCHOOL” OF
SPIRITUAL INSTRUCTION.



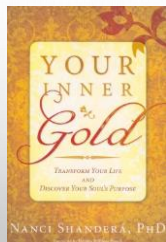
IN ALCHEMY, A COAGULATED PERSON IS A COMPLETE, WHOLE BEING WHOSE CONSCIOUSNESS ON ALL LEVELS, WHETHER PHYSICAL, MENTAL, OR EMOTIONAL IS SPIRITUALLY INTEGRATED.

THIS PERSON HAS DISCOVERED WHAT ALCHEMISTS CALL THE PHILOSOPHER'S STONE, THE QUINTESSENTIAL PROOF OF ALCHEMICAL ENLIGHTENMENT, BY HAVING TRAVELED THROUGH ALL THE STAGES, OVER AND OVER, UNTIL THE WHOLE BEING IS PERFECTED.



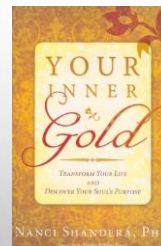
ONE WITH A PURIFIED, OR COAGULATED, CONSCIOUSNESS LIVES IN A REALITY WHERE REACTIVITY AND FEAR HAVE BEEN REPLACED BY A GENUINE, SOLID BELIEF IN UNITY WITH HIGHER CONSCIOUSNESS, THE DIVINE.

THE COAGULATED PERSON PERCEIVES LIFE VERY DIFFERENTLY THAN DO ORDINARY PEOPLE—HE OR SHE LIVES IN A REALITY WHERE REACTIVITY AND FEAR HAVE BEEN REPLACED BY UNIFIED CONSCIOUSNESS WITH THE DIVINE.



WE DON'T GAIN THE PHILOSOPHER'S STONE—HIGHER CONSCIOUSNESS—EASILY. WE HAVE TO FIGHT THROUGH AND EARN IT BY WORKING ALL THE PROCESSES OF TRANSFORMATION: *CALCINATION*: INCINERATING THE EGO'S CONTROL; *DISSOLUTION*: REDEEMING EMOTION AND INTUITION; *SEPARATION*: DISCOVERING DISCERNMENT AND WISDOM; *CONJUNCTION*: OPENING THE HEART THROUGH BALANCING THE INNER MASCULINE AND FEMININE; *FERMENTATION*: INTEGRATING LOWER LEVELS OF CONSCIOUSNESS WITH THE HIGHER THROUGH FIRE AND FERMENT; *DISTILLATION*: DISTILLING ALL THE WORK ALREADY DONE AND DEVELOPED TO A PURE ESSENCE; AND *COAGULATION*: SURRENDERING INTO A NEW CONSCIOUSNESS OF WHOLENESS.

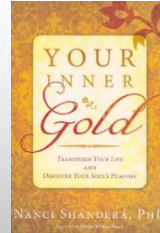
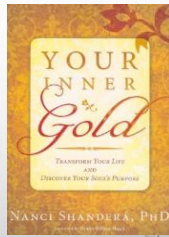
EVERY ONE OF THESE PROCESSES REQUIRES A SACRIFICE, GENERALLY CONSISTING OF OLD, OUTDATED, AND CHERISHED BELIEFS.



BY LEARNING TO EXCHANGE OLD, FEAR-BASED ATTITUDES AND PERCEPTIONS FOR NEW, LIFE-GIVING ONES, WE ENTER THE MYSTERY OF SACRIFICE.

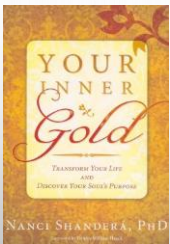
THE ACTUAL DEFINITION OF THE WORD *SACRIFICE* IS “TO MAKE SACRED.” TRUE SACRIFICE TRANSMUTES LESS DEVELOPED LEVELS OF CONSCIOUSNESS INTO AN AWAKENED STATE. IN MOST CASES, SACRIFICE REQUIRES THAT THE EGO'S DESIRES, PROTECTIONS, AND CONTROLS ARE RELINQUISHED FOR THE GREATER GOOD.

When an old house is being remodeled, energies of times and people gone by are stirred up as the walls are ripped off and the foundation is repurposed. Without conscious awareness of how our traumas affect everything in profound, far-reaching ways, combined with the belief that we have been harmed by others and the refusal to sacrifice those beliefs, we are haunted by the effects of negativity that radiate through our lives. Elizabeth Gilbert, author of *Eat, Pray, Love*, writes: "... I can see exactly where my episodes of unhappiness have brought suffering or distress or (at the very least) inconvenience to those around me. The search for contentment is, therefore, not merely a self-preserving and self-benefitting act, but also a generous gift to the world. Clearing out all your misery gets you out of the way. You cease being an obstacle, not only to yourself but to anyone else. Only then are you free to serve and enjoy other people." ❦



EVERYTHING WE DO, SAY, THINK, OR FEEL HAS AN EFFECT ON OURSELVES AND OTHERS. WHEN SOMETHING IS TO BE RENEWED, REVISED, REMODELED, REBUILT, RECTIFIED, REPAIRED, RESTORED, OR REJUVENATED, IT REQUIRES SACRIFICE, WHETHER SIMPLE OR PROFOUNDLY DIFFICULT.

SPECIFICALLY, IT REQUIRES ENGAGEMENT WITH THE HEART, OR ELSE IT IS NOT AN AUTHENTIC AND COMPLETE SACRIFICE. TRUE SACRIFICE REQUIRES LOVE—OF SELF AND OTHERS.



SOME OF US ARE EMPATHIC, WHICH CAN BE DIFFICULT BECAUSE WE MAY FEEL OTHERS' PAIN TWICE AS GREATLY AS OUR OWN. THE KEY IS LEARNING THE DIFFERENCE BETWEEN OUR OWN FEELINGS AND REACTIONS AND THOSE OF OTHERS SO WE TRANSMUTE THEIR SUFFERING RATHER THAN TAKING IT ON AS OUR OWN.

THIS HAS ALWAYS BEEN A CHALLENGE FOR HEALERS AND CAREGIVERS BECAUSE OF THEIR EMPATHIC NATURE. BUT IT IS A HIGHER WORK WHEN WE CAN FOCUS ON THE OTHER'S HIGHEST TRUTH. THIS FREES THEM TO FACE THEIR OWN ISSUES WITHOUT HAVING BEEN RESCUED BY OUR TAKING ON THEIR PAIN.



Dematerialization and getting into heaven is not the final stage of alchemy. The eighth stage is a step off the ladder of transformation and a return to where we started. "Its inherent Strength is perfected," we are told, "if it is turned into Earth."

The successful Coagulation is only made real if it "descends again to Earth" and enters into the processes of projection and multiplication to perfect others.

It is the return of Buddha, Mohammad, Christ, (Tara, Quan Yin, Mary's) and all the saints. In this view, we are truly the Salt of the earth.



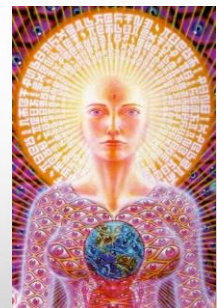
Symbols at this stage represent the joining of opposites on all levels necessary at this stage.

The alchemist deliberately slows down the pace of her life to allow feelings and intuition to surface. In this way, she stays connected to a newly discovered Presence within.

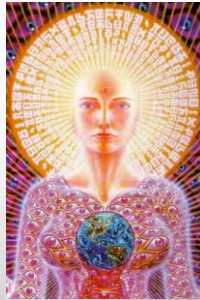
The transcendent body or the light body represents the union of the personal and transpersonal realms.

This Body of Light is the ultimate golden treasure.

The subtle body resides in an imaginal realm connected to the archetypal dimension in which the individual soul connects to the world soul or vertical axis of reality.



This middle ground which exists between the stars above and the stars within. By differentiating this middle ground, by creating this imaginal dimension in which to survive, one connects with nature and the cosmos, both the Below and the Above.



Psychologically, the Phoenix is the resurrected personality seen as a successful individuation resulting in peace of mind, heightened energy, and a free-flowing adaptability to new situations.

Coagulation Meditation

FULLY
CLAIMING
YOUR
DIVINITY



Divine
Expression
Dance



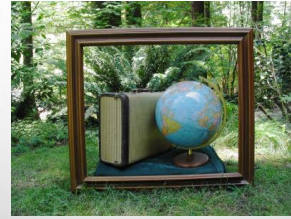
Any guidance for
your money/financial creations?



Any guidance for your business
creations?



Any guidance for your personal leadership and creation desires?



Any guidance for your personal fulfillment?

CLOSING MESSAGE?



GRATITUDE GROUND & CLOSE

