

*Welcome
to the
Source Light
High Priestess
Process*





Module 18 ~ Connecting More Deeply with
DIVINE SOPHIA ~ HOLY WISDOM ~ SACRED SENSE





Calling In Sacred Space





Connect to the Earth

Open to Receive

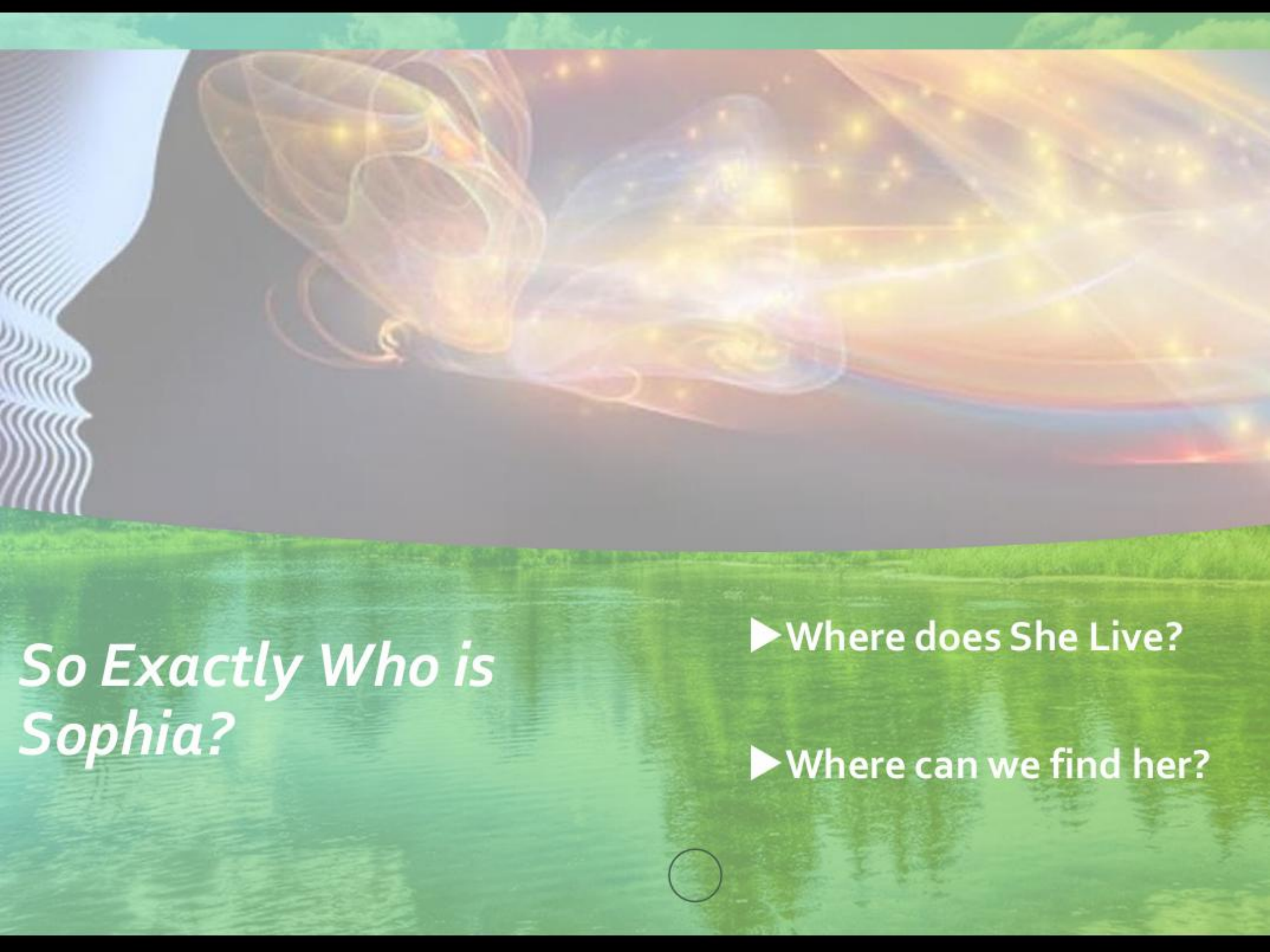




Check-in ~

HAVE YOU FELT THE DIVINE FEMININE MOVING IN YOU?





So Exactly Who is Sophia?

- ▶ Where does She Live?
- ▶ Where can we find her?



The image features a dark, star-filled sky with a prominent concentration of stars in the center, creating a bright, circular glow. The stars are primarily white and light blue. A curved, greenish-yellow horizon line separates the starry sky from a darker, textured green area at the bottom. The text "Let's begin at the beginning..." is written in white, sans-serif font across the green area.

Let's begin at the beginning...



As you may remember...

Ceremony puts us in direct contact with the Soul of the World...the Divine Sophia – Holy Wisdom.

Her Story – She was a big Creator Spirit, an Aeon. These are great spiritual forces, emanating directly from Source, that live in the Pleroma, deep in the black hole, the heart of our Galaxy. She emerged from the Pleroma as a river of light who expanded out into the 2 arms of chaos of the galaxy. From there she dreamed the dream of the Anthropos – humans and she fell in love with her dream. So, she left the safety of the Pleroma and expanded herself out into the galaxy and solidified herself into this planet. This planet is her physical body, and her spirit is the organic white light which we can communicate with through Ceremony.

Connecting with Her in this way actually activates codes in our DNA that have become dormant from lack of use. By coming into contact with Her on a regular basis we establish communication with Her these pathways are re-activated. It heals us and it heals Her.



Holy One, Un-namable, living life, past present future, absolutely had to have me
Was envious, possessive of the very sensuousness of me, right from the very start,
Right from the head of creation's caravan, before any THING arose,
At this first beginning-ness, I poured myself out like holy wine onto the ground even though
there was no ground, no earth, no form, or individuality yet to absorb me;
At that point, there was no deep, not to mention any depths upon which I could dance in my
role as the great dark, waiting to catch my breath. But I danced anyway, writhing, pausing,
waiting, moving in TIME with my partner, knowing that what would come and not yet been:
The Spring of Existence, of livingness, of beingness, from which that glorious and heavy flow of
creation would be streaming.

From which That glorious and heavy flow of creation is streaming now. From the very depths of
the depths, I was dancing within you, from this first flow of senses embracing ever-living life in
your breath. (In other words, I have always been with you, within you, as close as your
breath...)

Proverbs 8:22-24 Speaking about - Holy Wisdom (Hochmah) or Sacred Sense, the wisdom
within us that unites all of our senses that is sensing through us.

From Original Meditation, By Neil Douglas-Klotz



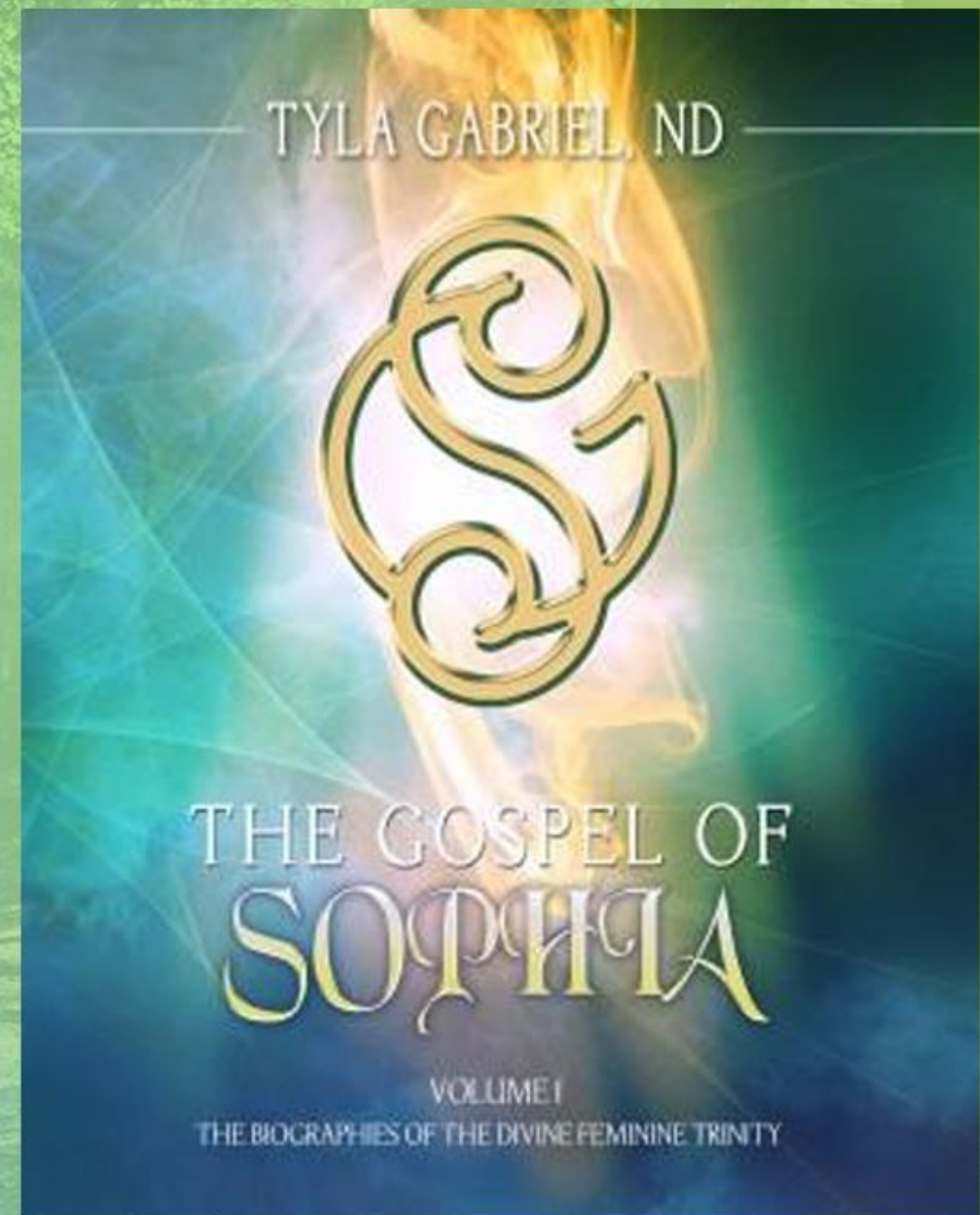
"No one has beheld Her fiery
beauty in Her hallowed halls

beneath us,

No one has known Her virgin
soul from times
immemorial,

No one can stand upright on
earth without Her fiery hold,

No one can remember
creation without sounding
Her names of old."

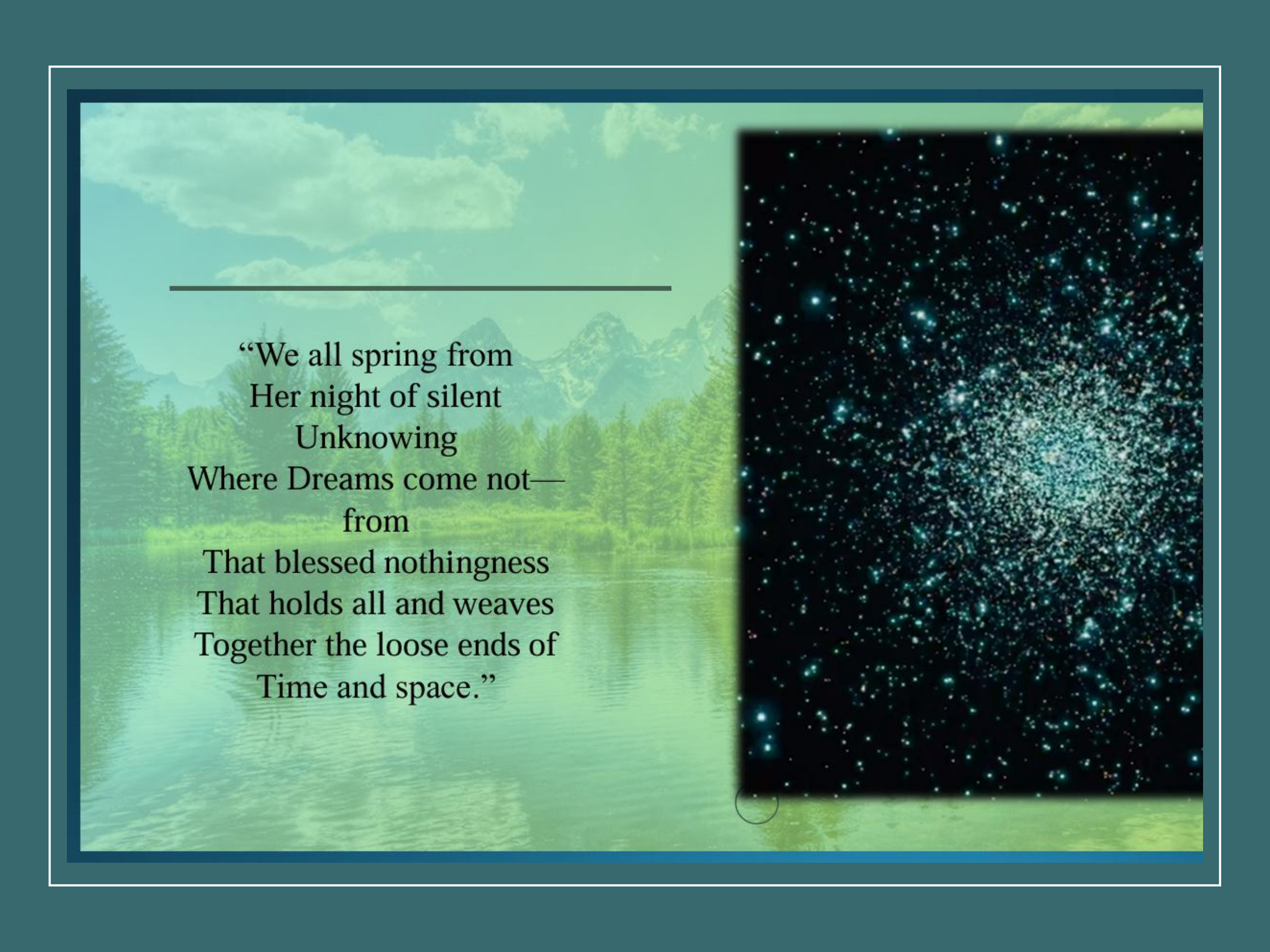


Sophia is a guerilla combat Goddess, attired in camouflage veils so complete that many orthodox spiritualities never realized that the Goddess was still accompanying them.

Sophia plays, hides, adapts, disguises, brings justice.

The Goddess did not simply die out or go into cold storage two thousand years ago to be revived today in the same forms she manifested then. If the Goddess wanted to survive and accompany her people, surely, she would have done so in a skillful and subtle manner. She is the great lost Goddess who has remained intrinsically gently within the orthodox spiritualities. She is veiled, blackened denigrated and ignored most of the time...She is allowed to be a messenger, a mediator, a helper, a handmaid: she is rarely allowed the privilege of being seen to be in charge, full self-possessed and creatively operative.



The image is a composite of two distinct scenes. The left side features a serene landscape with a calm lake reflecting the surrounding greenery and distant, misty mountains under a blue sky with soft clouds. The right side is a dark, starry night sky filled with numerous bright, multi-colored stars (blue, white, and red) scattered across the black void. A thin horizontal line is positioned above the text on the left side.

“We all spring from
Her night of silent
Unknowing
Where Dreams come not—
from
That blessed nothingness
That holds all and weaves
Together the loose ends of
Time and space.”

“Throughout history, many thinkers have sought the mystery of Wisdom and tried to plumb Her depths. All ancient cultures initially worshipped the Great Goddess in one of Her many forms:

Prajnaparamita in India, Hecate in Persia,

Inanna in Babylon,

Isis in Egypt,

Shekinah of the Hebrews, Athena in Greece,

Sophia of the Gnostics, Philosophia of the Scholastics,

and the being of Anthroposophia to Rudolf Steiner.”

BUT IN TRUTH: SHE IS THE FORMLESS,

THE SUBSTANCE THAT THINKS...

WE CAN'T SEE HER..BUT WE CAN FIND HER!



"Sophia is Wisdom.
The human body is all-wise.
The universe is formed in the shape of a human
body.
That body is Sophia.
She is the manifest world and all things in it.
Sophia's naked body is the birth, death, and
rebirth of all natural things in the known world.
This process is Her breathing; from super-
massive black holes that swallow billions of suns
and make them vanish, to super-massive galactic
ion jets that alternate and conversely spin out
billions of suns from seeming nothingness...
God is unmanifested divine order.
Sophia is both manifest and unmanifest potential
or ***the Creatrix***.
Sophia is the consort or beloved of God.
Sophia is God manifest in this world."



Sophia is Divine Feminine Essence...

PURE UNADULTERATED LIFE
FORCE ENERGY...
FOUND IN EVERY LIVING THING
THAT UNSEEN, UNKNOWNABLE, YET
KNOWABLE FREQUENCY THAT
LIVES US...
THAT BREATHES US
THAT KNOWS US
THAT BIRTHED US

SHE'S EVERYWHERE AND
NOWHERE ALL AT ONCE
SHE IS THE FORCE THAT SOURCES
US.



SO HOW DO WE FIND HER?

**SHE IS A FREQUENCY...
SO, WE VIBRATE WITH HER.**

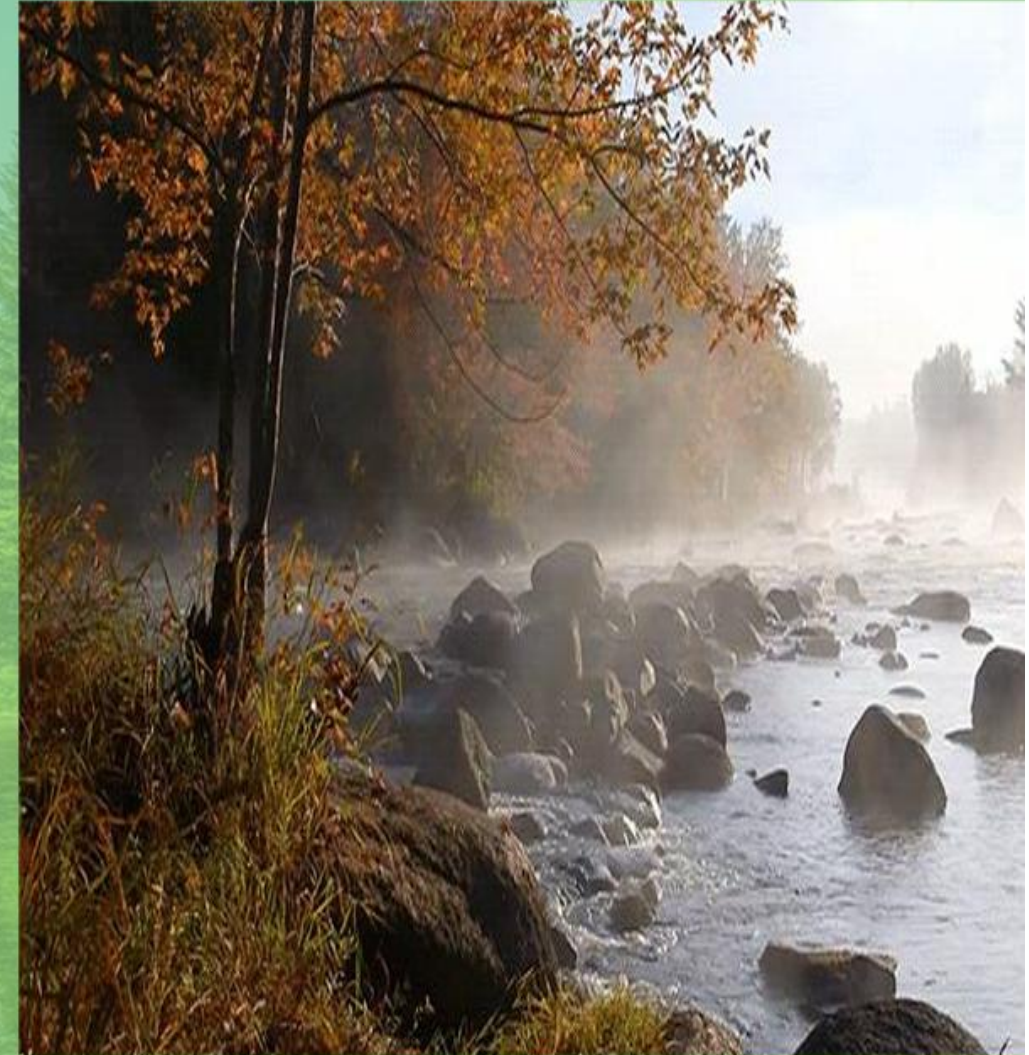
"Wisdom is not stupid: she knows that any attempt to impose form upon her movements is a doomed undertaking...so she turns the kaleidoscope when we aren't looking."

--Caitlin Mathews



➤ OF COURSE, GROUNDING IS A GOOD WAY.. THAT IS A GOOD WAY TO FIND HER IN THE PUREST FORM

- CONNECTING TO OUR SOUL
- MEDITATION
- CHANTING – SACRED SOUND
- QUALITATIVE MEASUREMENT
- EXPERIENCE HER FORMLESSNESS
- FEEL HER
- JOURNAL ~ EXPLORATION



Connecting to Sophia – Reading list

The Gospel of Sophia Volumes 1, 2 and 3 by Tyla Gabriel – Start with Volume 1, it is the most extensive.

Sophia ~ Goddess of Wisdom by Caitlin Matthew

Sophia ~ The Feminine Face of God by Karen Speerstra

The Return of the Divine Sophia~Healing the Earth through the Lost Wisdom Teachings of Jesus, Isis and Mary Magdalene by Tricia McCannon

Pistis Sophia ~ A Coptic Text of Gnosis with Commentary – J.J. and Desiree Hurtak

DRAMATIC CHANTING with Neil Douglas-Klotz

- Sound Vibration with no baggage, no dogma, no expectations
- Heals you, then evaporates



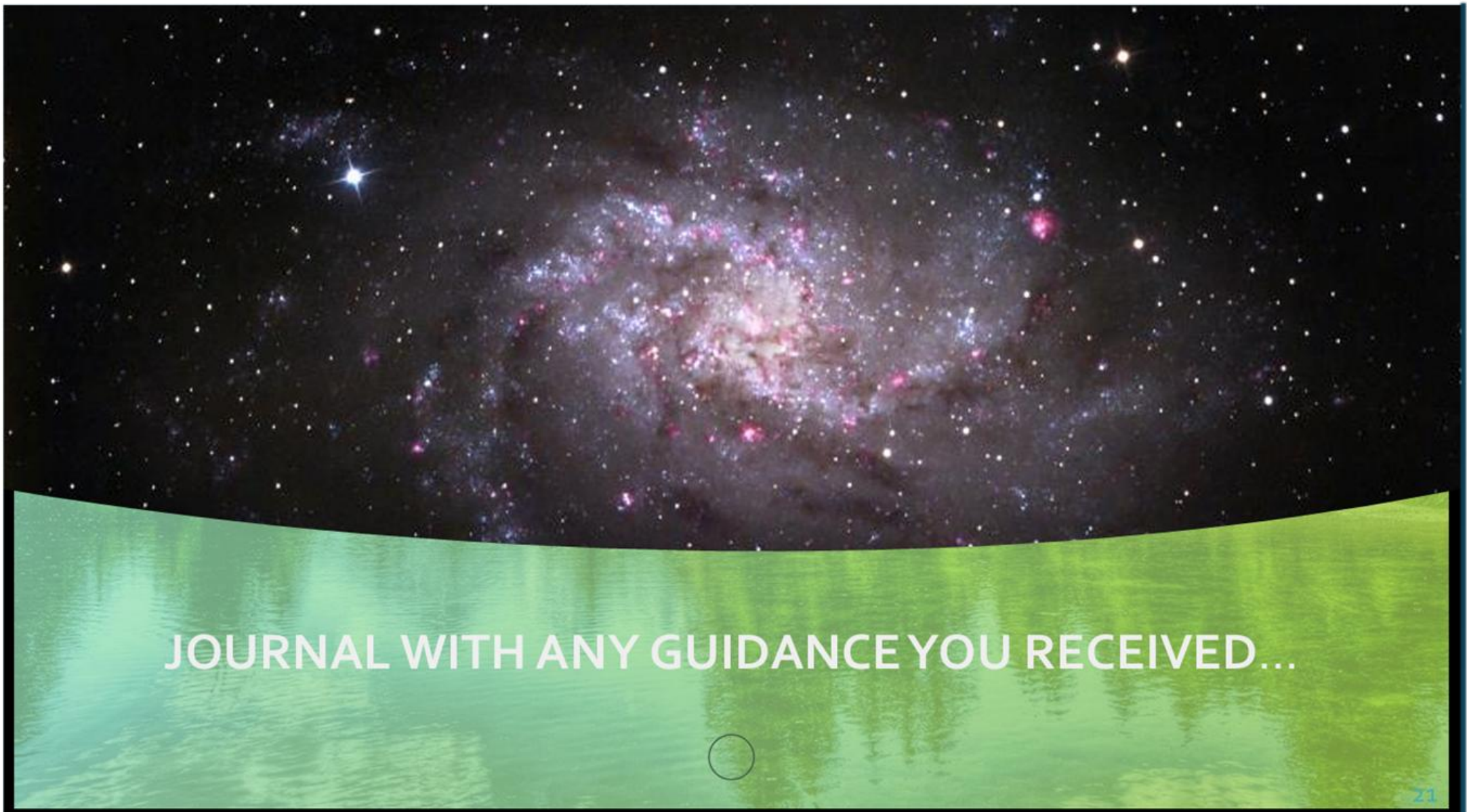
www.Abwoon.org



be'en-tehomot cholaleti cholaleti, be'en-ma'yanot nikhbaddei-mayim

From the very depths of the depths, I was dancing within you, from this first flow of senses embracing ever-living life in your breath. (In other words, I have always been with you, within you, as close as your breath...)





JOURNAL WITH ANY GUIDANCE YOU RECEIVED...



JOURNAL WITH ANY GUIDANCE YOU RECEIVED...



Dance and Integrate





We are the stardust of a thousand worlds, swirling into the dance of life,
Filed with dark light that has fallen into our bones and marrow,
Igniting the heart, the organ of fire and love that shines ever brilliant.





CLOSE SACRED SPACE